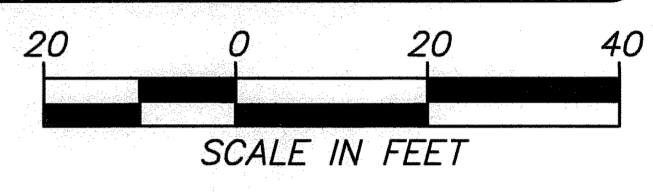


REGION NO.	STATE	FEDERAL AID PROJECT NO.	SHEET NO.	TOTAL SHEETS
10	WASH.	STPUL 3170(003)	13	20

CURVE NO.	P.C. STA (OFFSET)	RADIUS	LENGTH	TANGENT	DELTA	P.T. STA (OFFSET)
C1	"R/W" 84+59.57 (60.00' RT)	2,925.00'	141.10'	70.56'	02°45'50"	"R/W" 85+97.76 (60.00' RT)
C2	SEE C12 SHEET 6					
C3	"R/W" 84+97.00 (106.35' RT)	2,419.45'	183.43'	91.76'	04°20'38"	"R/W" 86+73.71 (91.49' RT)
C4	"R/W" 87+06.47 (60.00' RT)	2,925.00'	146.93'	73.48'	02°52'41"	"R/W" 88+55.26 (60.11' RT)

PARCEL NO.	NAME	TOTAL AREA	R/W ACQUISITION	REMAINDER	SLOPE ESMT	DRAINAGE ESMT
5591E	2007 TATE FAMILY LLC	107,158 SF	2,862 SF	104,296 SF	1,073 SF	
5592A	HEBERT, PATRICK G & DEBORRAH K			SEE SHEET 5		
5592B	HEBERT, PATRICK G			SEE SHEET 6		
5633	TATE TRUST	36,097 SF	1,428 SF	34,669 SF	1,667 SF	
5634	RESSIG ETAL	232,610 SF		232,610 SF	1,132 SF	

CALL 2 WORKING DAYS BEFORE YOU DIG  
**1-800-424-5555**  
 UTILITIES UNDERGROUND LOCATION CENTER



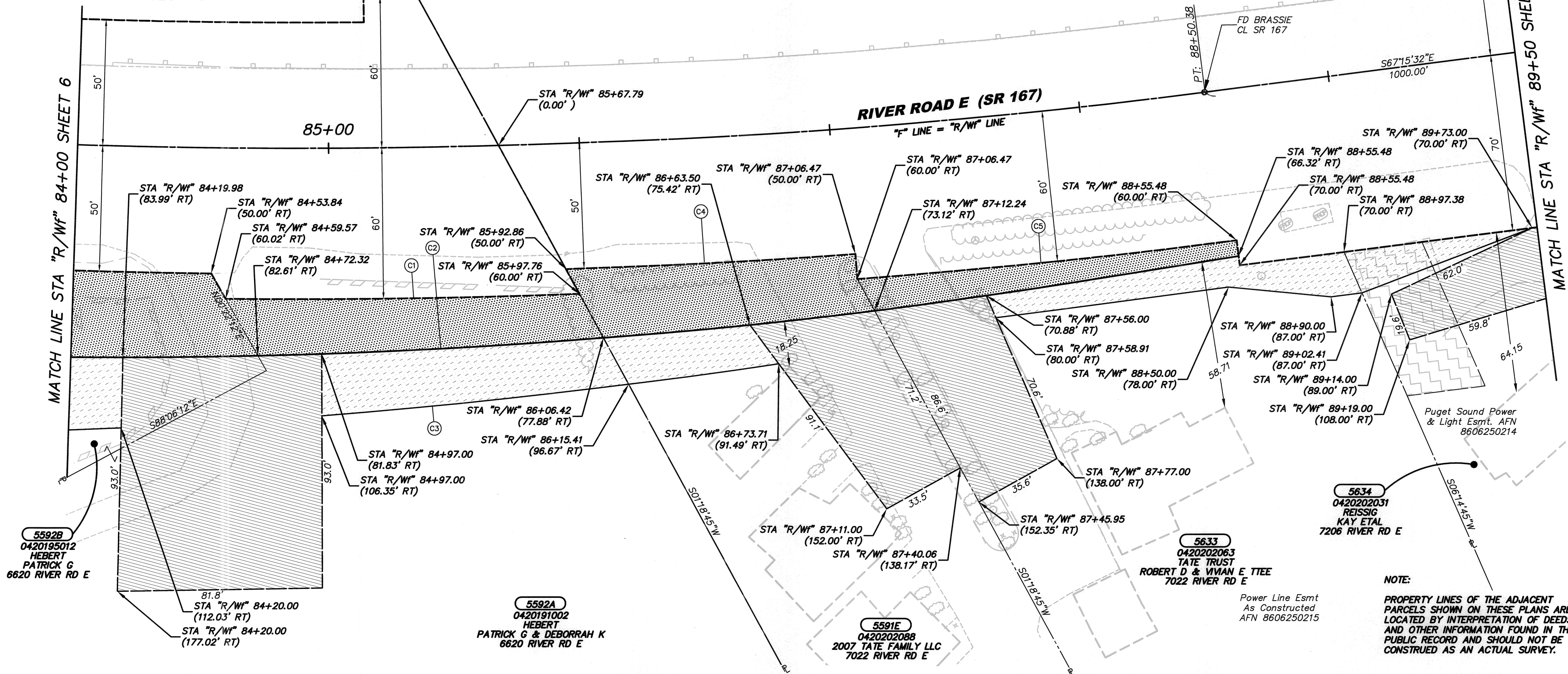
P.I. STA	RADIUS	LENGTH	TANGENT	DELTA
"R/W" 83+99.72	SEE SHEET 6			

**T. 20 N, R. 4 E., W.M.**

NW 1/4 NW 1/4  
 SEC. 20

PUYALLUP RIVER

NE 1/4 NE 1/4  
 SEC. 19



5592B  
 0420195012  
 HEBERT  
 PATRICK G  
 6620 RIVER RD E

81.8'  
 STA "R/W" 84+20.00  
 (112.03' RT)  
 STA "R/W" 84+20.00  
 (177.02' RT)

5592A  
 0420191002  
 HEBERT  
 PATRICK G & DEBORRAH K  
 6620 RIVER RD E

5591E  
 042020088  
 2007 TATE FAMILY LLC  
 7022 RIVER RD E

5633  
 042020263  
 TATE TRUST  
 ROBERT D & VIVAN E TTEE  
 7022 RIVER RD E

5634  
 042020231  
 REISSIG  
 KAY ETAL  
 7206 RIVER RD E

NOTE:  
 PROPERTY LINES OF THE ADJACENT  
 PARCELS SHOWN ON THESE PLANS ARE  
 LOCATED BY INTERPRETATION OF DEEDS  
 AND OTHER INFORMATION FOUND IN THE  
 PUBLIC RECORD AND SHOULD NOT BE  
 CONSTRUED AS AN ACTUAL SURVEY.

Power Line Esmt  
 As Constructed  
 AFN 8606250215

DRAWN BY: C. LAKOSE	BOOK NO.: 1424
DESIGNED BY: L. SANFORD	SURVEYED BY: D. AUCKLAND
CHECKED BY: R. SCHLONGA, P.E.	DATE SURVEYED: 6-30-2000
REVIEWED BY: P. BAUGHMAN, P.E.	DATE PLOTTED: Oct. 2012

NO.	DATE	REVISION	BY	APPROVED

**Pierce County**  
 Public Works and Utilities  
 Office of the County Engineer  
 Tacoma Mall Office Building  
 4301 South Pine Street, Suite 446  
 Tacoma, Washington 98409-7207  
 An APWA Accredited Agency

10/17/12  
 County Engineer  
 APPROVED BY:  
  
 BRIAN D. STACY, P.E. DATE  
  
 RAMIRO A. CHAVEZ, P.E., PGMP  
 PROJECT ENGINEERING MANAGER

**CANYON RD E NORTHERLY EXTENSION**  
**62ND AVE E TO 45TH ST CT E**  
**RIGHT OF WAY PLAN SHEET**  
**CRP 5498**

Drawing: P:\5498-525TE70AVE\ENGRS\DRAWINGS\RIGHTOFWAY\PLANSHEETS\5498R/WPLAN02.DWG Layout Tab: ROW 13  
 Xrefs: 5498SECTIONINDEX.DWG / 5498-5643-TOPINDEX.DWG / 5498 ROW INDEX.DWG / 5498R/WINDEX.DWG / 5498-525TE70AVE SURVEYINDEX.DWG  
 Date: 10/10/2012 Time: 02:19:34 PM Plotted by: CLAKOSE