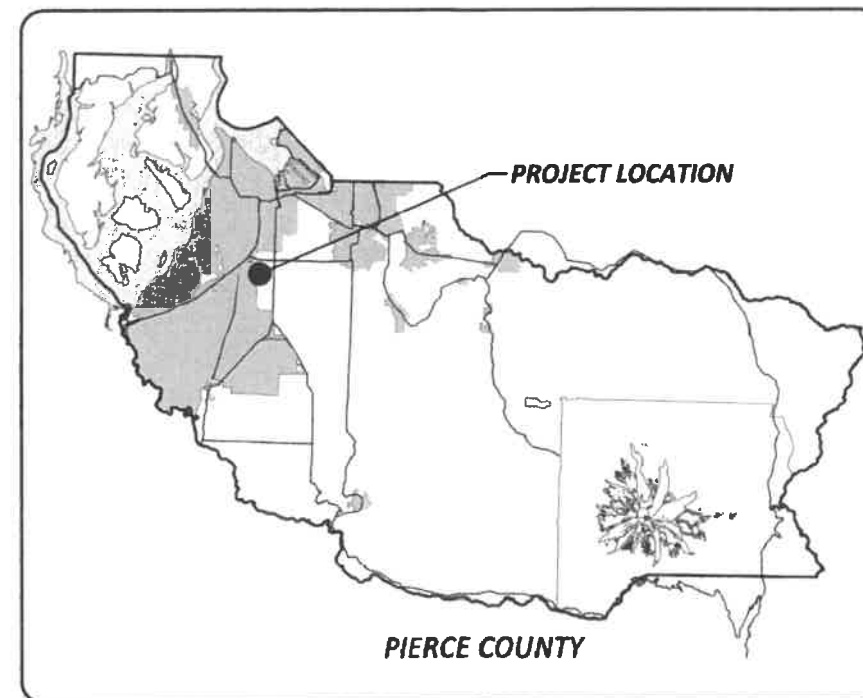


**121ST STREET SOUTH**  
**C STREET SOUTH TO SR 7**  
**CRP 5878**  
**FEDERAL AID NO. TAP 3070(001)**  
**RIGHT-OF-WAY PLANS**

- 1 COVER SHEET  
 2 - 3 RIGHT-OF-WAY PLAN

**INDEX**



**LOCATION MAP**



**VICINITY MAP**



Know what's below.  
 Call before you dig.

Drawing: P:\5878-121\_ST\_5\DESIGN\DRAWINGS\RIGHT\_OF\_WAY\PLAN\_SHEETS\5878\_ROWCOVERSHEET.DWG Layout Tab: CV01  
 Xrefs:  
 Date: 03/19/2019 Time: 02:40:41 PM Plotted by: STREBER

<b>DRAWN BY:</b> S. TREBER	<b>BOOK NO.:</b> ---
<b>DESIGNED BY:</b> L. SANFORD	<b>SURVEYED BY:</b> JAMILEH/WHEATLEY
<b>CHECKED BY:</b> D. CAVANAGH, P.E.	<b>DATE SURVEYED:</b> JUNE 2018
<b>REVIEWED BY:</b> P. BAUGHMAN, P.E.	<b>DATE PLOTTED:</b> March 19, 2019

NO.	DATE	REVISION	BY	APPROVED

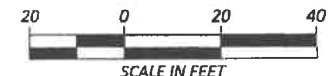
**Pierce County**  
 Planning & Public Works  
 Office of the County Engineer  
 Tacoma Mall Office Building  
 4301 South Pine Street, Suite 628  
 Tacoma, Washington 98409  
 An APWA Accredited Agency



Office of the County Engineer  
 APPROVED BY:  
 Brian D. Stacy, P.E. 3-24-19  
 DATE  
 LETTICIA M. NEAL, P.E.  
 TRANSPORTATION IMPROVEMENT SECTION MANAGER

**121ST STREET SOUTH**  
**C STREET SOUTH TO SR 7**  
**COVER SHEET**  
**CRP 5878**

SHEET  
**1**  
 OF  
**3**



T. 19 N., R. 3 E., W. M.  
NE 1/4 SW 1/4  
SEC. 9

**LEGEND (EXISTING)**

- MONUMENT
- MAILBOX
- COMMERCIAL SIGN
- YARD LIGHT
- TRAFFIC SIGNAL POLE/LUMINAIRE
- TRAFFIC SIGNAL PEDESTRIAN POLE
- JUNCTION BOX
- SINGLE POST TRAFFIC SIGN
- TREE (CONIFER)
- TREE (DECIDUOUS)
- UTILITY POLE
- UTILITY POLE ANCHOR
- POWER GUY POLE
- TELEPHONE VAULT
- TELEPHONE RISER
- STORM DRAIN CATCH BASIN
- STORM DRAIN MANHOLE
- WATER METER
- FIRE HYDRANT
- WATER VALVE
- CENTERLINE
- EASEMENT
- BUILDING
- BUILDING OVERHANG
- EDGE OF GRAVEL
- EDGE OF PAVEMENT
- EDGE OF CONCRETE
- CURB AND GUTTER
- DETECTOR LOOP
- CREEK/DITCH
- FENCE
- PROPERTY LINE
- RIGHT-OF-WAY
- RETAINING WALL
- GATE
- SANITARY SEWER
- STORM SEWER
- DONATION LAND CLAIM
- VEGETATION

PARCEL #  
TAX PARCEL #  
LAST NAME  
FIRST NAME  
SITE ADDRESS

EXISTING EASEMENT

**LEGEND (PROPOSED)**

- CONSTRUCTION PERMIT
- DRIVEWAY RECONST. PERMIT
- TEMPORARY EASEMENT



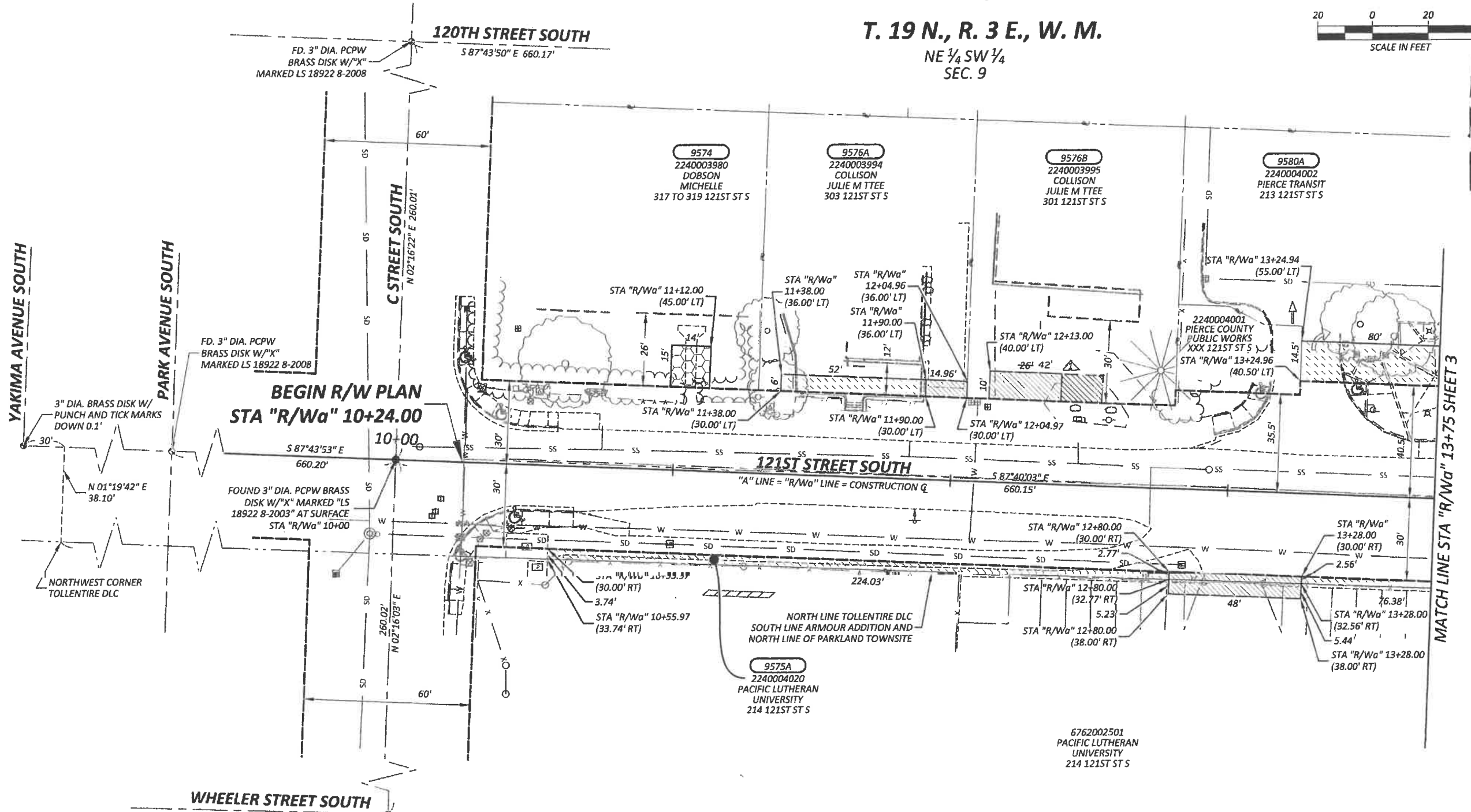
DATUM:

HORIZONTAL: NAD 83 (2011) 2010 & WSPC SOUTH ZONE

VERTICAL: NAVD 88 (NAD83 2011) WSDOT BM 27007-93

A PROJECT BASIS OF BEARING OF N 02°16'03" E WAS HELD BETWEEN A 3" PCPW STANDARD BRASS SURFACE MONUMENT IN THE INTERSECTION OF C ST S & WHEELER ST S AND A 3" PCPW STANDARD BRASS SURFACE MONUMENT IN THE INTERSECTION OF C ST S & 121ST ST S.

PROJECT TBM "A": WSDOT BENCHMARK BM27007-93. A WSDOT BRASS DISK CEMENTED INTO A DRILL HOLE AND SET LEVEL WITH THE CONCRETE SIDEWALK IN THE NW QUAD OF 121ST ST S & SR 7. APPROX. 4FT FROM EOC & 15FT NORTH OF THE LUMINAIRE.  
ELEV: 341.27 USF (NAVD 88)



PARCEL NO.	NAME	TOTAL AREA	R/W ACQUISITION	REMAINDER	TEMPORARY EASMENT	CONSTRUCTION PERMIT
9574	DOBSON, MICHELLE	10,000 SF		10,000 SF		210 SF
9575A	PACIFIC LUTHERAN UNIVERSITY	1,450 SF		1,450 SF	1,257 SF	
9576A	COLLISON, JULIE M TTEE	7,500 SF		7,500 SF	312 SF	
9580A	PIERCE TRANSIT	12,094 SF		12,094 SF	1,415 SF	

NOTE:  
PROPERTY LINES OF THE ADJACENT PARCELS SHOWN ON THESE PLANS ARE LOCATED BY INTERPRETATION OF DEEDS AND OTHER INFORMATION FOUND IN THE PUBLIC RECORD AND SHOULD NOT BE CONSTRUED AS AN ACTUAL SURVEY.

Drawing: P:\5878-121\_ST\_SIDEWALKDRAWINGS\RIGHT\_OF\_WAY\PLAN\_SHEETS\5878\_ROWPLAN01.DWG Layout Tab: ROW01  
Xrefs: 5878\_CRTINDEX.DWG / SURVINDEX\_5878.DWG / 5878\_PROPROVINDEX.DWG / 5878\_DESIGNINDEX.DWG / 5878\_DESIGN\_INDEX.DWG  
Date: 03/19/2019 Time: 02:41:32 PM Plotted by: STREBER

DRAWN BY: S. TREBER	BOOK NO.:
DESIGNED BY: L. SANFORD	SURVEYED BY: JAMILEH/WHEATLEY
CHECKED BY: D. CAVANAGH, P.E.	DATE SURVEYED: JUNE 2018
REVIEWED BY: P. BAUGHMAN, P.E.	DATE PLOTTED: March 19, 2019

NO.	DATE	REVISION	BY	APPROVED
7-29-2019		REVISED DRP FOR PARCEL 9576B	SJT	[Signature]

**Pierce County**  
Planning & Public Works  
Office of the County Engineer  
Tacoma Mall Office Building  
4301 South Pine Street, Suite 628  
Tacoma, Washington 98409  
An APWA Accredited Agency

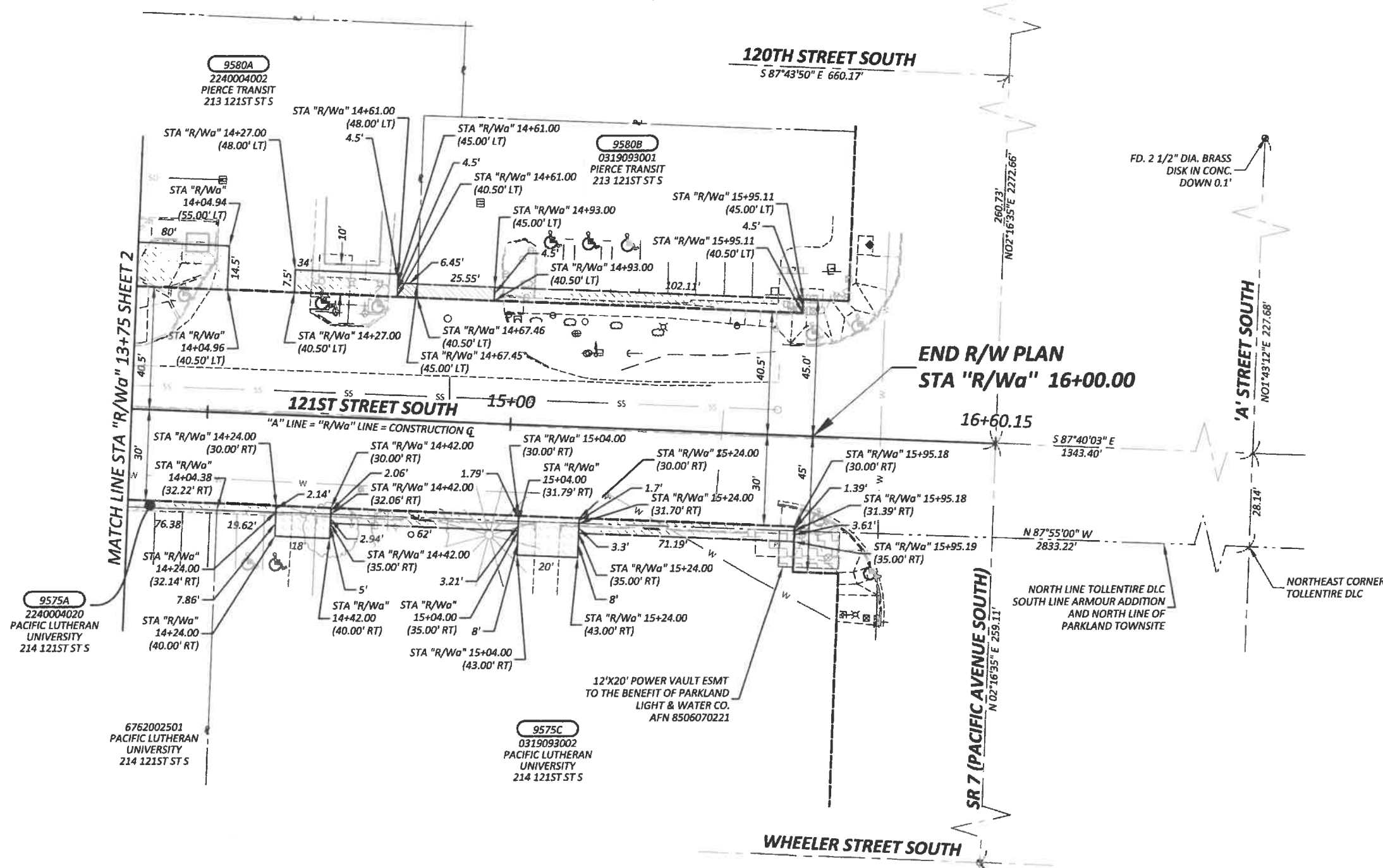
Office of the County Engineer  
APPROVED BY:  
[Signature]  
BRIAN D. STACY, P.E. DATE: 3-21-19

LETICIA M. NEAL, P.E.  
TRANSPORTATION IMPROVEMENT SECTION MANAGER

**121ST STREET SOUTH  
C STREET SOUTH TO SR 7  
RIGHT-OF-WAY PLAN  
CRP 5878**

SHEET  
2  
OF  
3

T. 19 N., R. 3 E., W. M.  
NE 1/4 SW 1/4  
SEC. 9



PARCEL NO.	NAME	TOTAL AREA	R/W ACQUISITION	REMAINDER	TEMPORARY EASMENT	CONSTRUCTION PERMIT
9575A	PACIFIC LUTHERAN UNIVERSITY			SEE SHEET 2		
9575C	PACIFIC LUTHERAN UNIVERSITY	39,775 SF		39,775 SF	804 SF	
9580A	PIERCE TRANSIT			SEE SHEET 2		
9580B	PIERCE TRANSIT	10,890 SF		10,890 SF	460 SF	

NOTE:  
PROPERTY LINES OF THE ADJACENT PARCELS SHOWN ON THESE PLANS ARE LOCATED BY INTERPRETATION OF DEEDS AND OTHER INFORMATION FOUND IN THE PUBLIC RECORD AND SHOULD NOT BE CONSTRUED AS AN ACTUAL SURVEY.

Drawing: P:\5878\121\_ST\_S\DESIGN\DRAWINGS\RIGHT\_OF\_WAY\PLAN\_SHEETS\5878\_ROW\PLAN01.DWG Layout Tab: ROW02  
Xref: 5878\_ORIGINAL.DWG / SURVINDEX 5878-121ST.S.DWG / 5878\_PROJROWINDEX.DWG / 5878\_DESIGNINDEX.DWG / 5878\_INDEX.DWG  
Date: 03/19/2019 Time: 02:41:13 PM Plotted by: STREBER

DRAWN BY: S. TREBER	BOOK NO.:
DESIGNED BY: L. SANFORD	SURVEYED BY: JAMILEH/WHEATLEY
CHECKED BY: D. CAVANAGH, P.E.	DATE SURVEYED: JUNE 2018
REVIEWED BY: P. BAUGHMAN, P.E.	DATE PLOTTED: March 19, 2019

NO.	DATE	REVISION	BY	APPROVED

**Pierce County**  
Planning & Public Works  
Office of the County Engineer  
Tacoma Mall Office Building  
4301 South Pine Street, Suite 628  
Tacoma, Washington 98409  
An APWA Accredited Agency

Office of the County Engineer  
APPROVED BY:  
*Brian D. Stacy*  
BRIAN D. STACY, P.E. DATE: 3-26-19  
LETICIA M. NEAL, P.E.  
TRANSPORTATION IMPROVEMENT SECTION MANAGER

**121ST STREET SOUTH  
C STREET SOUTH TO SR 7  
RIGHT-OF-WAY PLAN  
CRP 5878**

SHEET  
**3**  
OF  
**3**