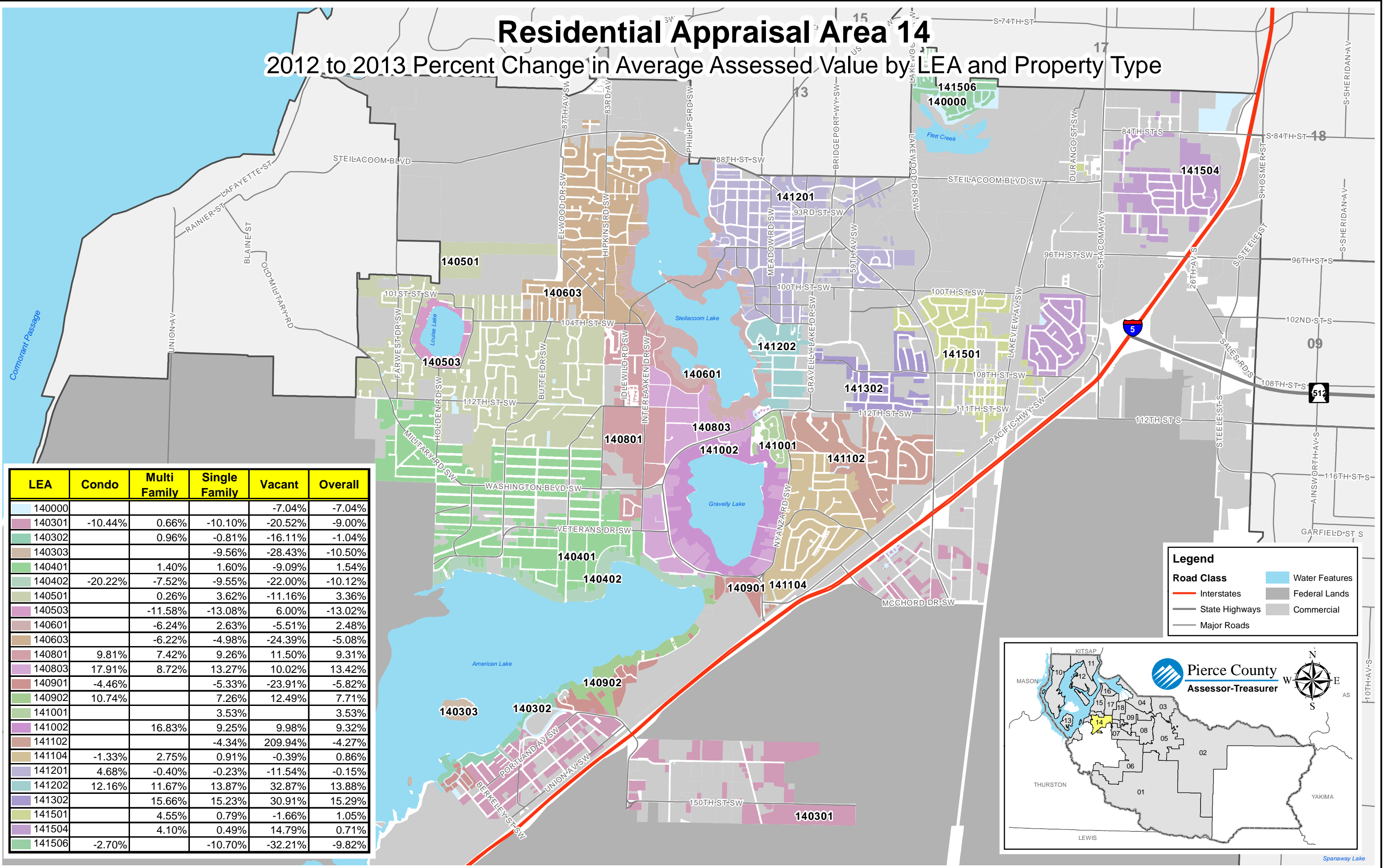


Residential Appraisal Area 14

2012 to 2013 Percent Change in Average Assessed Value by LEA and Property Type



LEA	Condo	Multi Family	Single Family	Vacant	Overall
140000				-7.04%	-7.04%
140301	-10.44%	0.66%	-10.10%	-20.52%	-9.00%
140302		0.96%	-0.81%	-16.11%	-1.04%
140303			-9.56%	-28.43%	-10.50%
140401		1.40%	1.60%	-9.09%	1.54%
140402	-20.22%	-7.52%	-9.55%	-22.00%	-10.12%
140501		0.26%	3.62%	-11.16%	3.36%
140503		-11.58%	-13.08%	6.00%	-13.02%
140601		-6.24%	2.63%	-5.51%	2.48%
140603		-6.22%	-4.98%	-24.39%	-5.08%
140801	9.81%	7.42%	9.26%	11.50%	9.31%
140803	17.91%	8.72%	13.27%	10.02%	13.42%
140901	-4.46%		-5.33%	-23.91%	-5.82%
140902	10.74%		7.26%	12.49%	7.71%
141001			3.53%		3.53%
141002		16.83%	9.25%	9.98%	9.32%
141102			-4.34%	209.94%	-4.27%
141104	-1.33%	2.75%	0.91%	-0.39%	0.86%
141201	4.68%	-0.40%	-0.23%	-11.54%	-0.15%
141202	12.16%	11.67%	13.87%	32.87%	13.88%
141302		15.66%	15.23%	30.91%	15.29%
141501		4.55%	0.79%	-1.66%	1.05%
141504		4.10%	0.49%	14.79%	0.71%
141506	-2.70%		-10.70%	-32.21%	-9.82%

Legend

- Interstates
- State Highways
- Major Roads
- Water Features
- Federal Lands
- Commercial

Pierce County
Assessor-Treasurer