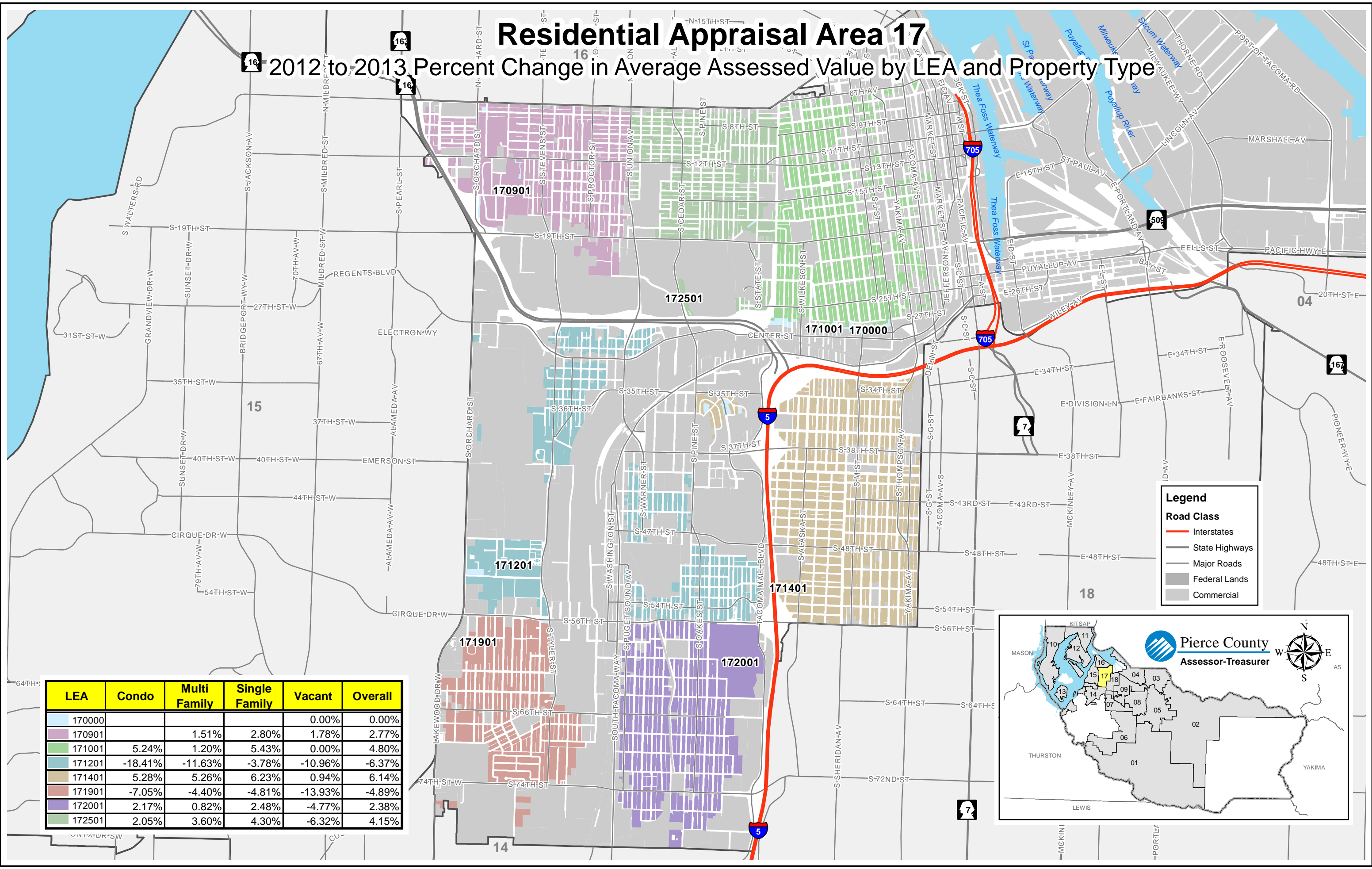


Residential Appraisal Area 17

2012 to 2013 Percent Change in Average Assessed Value by LEA and Property Type



Legend

Road Class

- Interstates
- State Highways
- Major Roads
- Federal Lands
- Commercial

LEA	Condo	Multi Family	Single Family	Vacant	Overall
170000				0.00%	0.00%
170901		1.51%	2.80%	1.78%	2.77%
171001	5.24%	1.20%	5.43%	0.00%	4.80%
171201	-18.41%	-11.63%	-3.78%	-10.96%	-6.37%
171401	5.28%	5.26%	6.23%	0.94%	6.14%
171901	-7.05%	-4.40%	-4.81%	-13.93%	-4.89%
172001	2.17%	0.82%	2.48%	-4.77%	2.38%
172501	2.05%	3.60%	4.30%	-6.32%	4.15%

Pierce County
Assessor-Treasurer