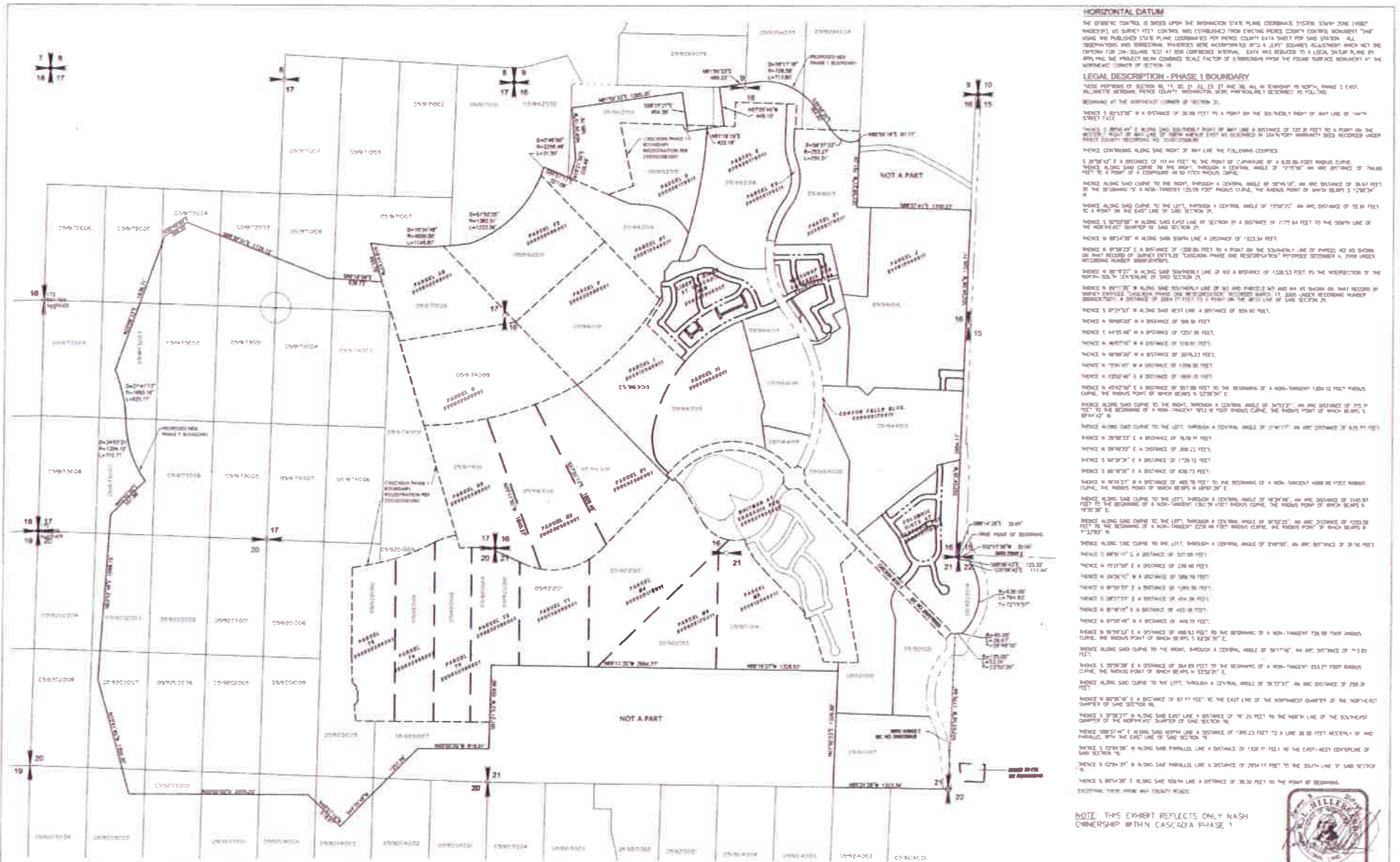


**Exhibit "A-3"**

**Tehaleh Phase 1 Boundary Map (NASH Ownership)**

**(Attached)**



**HORIZONTAL DATUM**  
 THE CURRENT CONTROL IS BASED UPON THE BRITISH COLUMBIA STATE PLANE COORDINATE SYSTEM 2011 (M82) (M82P) WHICH IS A GEODETIC CONTROL. THE CURRENT CONTROL WAS ESTABLISHED FROM ENGINEERING COUNTY CONTROL POINTS THAT WERE THE PUBLISHED STATE PLANE COORDINATES FOR BURNABY COUNTY. THESE COUNTY CONTROL POINTS WERE VERIFIED AND RECOMMENDED. THE CURRENT CONTROL WAS ESTABLISHED FROM THESE COUNTY CONTROL POINTS. THE CURRENT CONTROL IS A GEODETIC CONTROL. THE CURRENT CONTROL IS A GEODETIC CONTROL. THE CURRENT CONTROL IS A GEODETIC CONTROL. THE CURRENT CONTROL IS A GEODETIC CONTROL.

**LEGAL DESCRIPTION - PHASE 1 BOUNDARY**  
 VENCE 1 87°43'47" E A DISTANCE OF 36.00 FEET TO A POINT ON THE SOUTHWEST CORNER OF SAID LOT 5.  
 VENCE 2 89°20'47" E A DISTANCE OF 102.18 FEET TO A POINT ON THE SOUTHWEST CORNER OF SAID LOT 5.  
 VENCE 3 89°20'47" E A DISTANCE OF 102.18 FEET TO A POINT ON THE SOUTHWEST CORNER OF SAID LOT 5.  
 VENCE 4 89°20'47" E A DISTANCE OF 102.18 FEET TO A POINT ON THE SOUTHWEST CORNER OF SAID LOT 5.  
 VENCE 5 89°20'47" E A DISTANCE OF 102.18 FEET TO A POINT ON THE SOUTHWEST CORNER OF SAID LOT 5.  
 VENCE 6 89°20'47" E A DISTANCE OF 102.18 FEET TO A POINT ON THE SOUTHWEST CORNER OF SAID LOT 5.  
 VENCE 7 89°20'47" E A DISTANCE OF 102.18 FEET TO A POINT ON THE SOUTHWEST CORNER OF SAID LOT 5.  
 VENCE 8 89°20'47" E A DISTANCE OF 102.18 FEET TO A POINT ON THE SOUTHWEST CORNER OF SAID LOT 5.  
 VENCE 9 89°20'47" E A DISTANCE OF 102.18 FEET TO A POINT ON THE SOUTHWEST CORNER OF SAID LOT 5.  
 VENCE 10 89°20'47" E A DISTANCE OF 102.18 FEET TO A POINT ON THE SOUTHWEST CORNER OF SAID LOT 5.  
 VENCE 11 89°20'47" E A DISTANCE OF 102.18 FEET TO A POINT ON THE SOUTHWEST CORNER OF SAID LOT 5.  
 VENCE 12 89°20'47" E A DISTANCE OF 102.18 FEET TO A POINT ON THE SOUTHWEST CORNER OF SAID LOT 5.  
 VENCE 13 89°20'47" E A DISTANCE OF 102.18 FEET TO A POINT ON THE SOUTHWEST CORNER OF SAID LOT 5.  
 VENCE 14 89°20'47" E A DISTANCE OF 102.18 FEET TO A POINT ON THE SOUTHWEST CORNER OF SAID LOT 5.  
 VENCE 15 89°20'47" E A DISTANCE OF 102.18 FEET TO A POINT ON THE SOUTHWEST CORNER OF SAID LOT 5.  
 VENCE 16 89°20'47" E A DISTANCE OF 102.18 FEET TO A POINT ON THE SOUTHWEST CORNER OF SAID LOT 5.  
 VENCE 17 89°20'47" E A DISTANCE OF 102.18 FEET TO A POINT ON THE SOUTHWEST CORNER OF SAID LOT 5.  
 VENCE 18 89°20'47" E A DISTANCE OF 102.18 FEET TO A POINT ON THE SOUTHWEST CORNER OF SAID LOT 5.  
 VENCE 19 89°20'47" E A DISTANCE OF 102.18 FEET TO A POINT ON THE SOUTHWEST CORNER OF SAID LOT 5.  
 VENCE 20 89°20'47" E A DISTANCE OF 102.18 FEET TO A POINT ON THE SOUTHWEST CORNER OF SAID LOT 5.  
 VENCE 21 89°20'47" E A DISTANCE OF 102.18 FEET TO A POINT ON THE SOUTHWEST CORNER OF SAID LOT 5.  
 VENCE 22 89°20'47" E A DISTANCE OF 102.18 FEET TO A POINT ON THE SOUTHWEST CORNER OF SAID LOT 5.  
 VENCE 23 89°20'47" E A DISTANCE OF 102.18 FEET TO A POINT ON THE SOUTHWEST CORNER OF SAID LOT 5.  
 VENCE 24 89°20'47" E A DISTANCE OF 102.18 FEET TO A POINT ON THE SOUTHWEST CORNER OF SAID LOT 5.  
 VENCE 25 89°20'47" E A DISTANCE OF 102.18 FEET TO A POINT ON THE SOUTHWEST CORNER OF SAID LOT 5.  
 VENCE 26 89°20'47" E A DISTANCE OF 102.18 FEET TO A POINT ON THE SOUTHWEST CORNER OF SAID LOT 5.  
 VENCE 27 89°20'47" E A DISTANCE OF 102.18 FEET TO A POINT ON THE SOUTHWEST CORNER OF SAID LOT 5.  
 VENCE 28 89°20'47" E A DISTANCE OF 102.18 FEET TO A POINT ON THE SOUTHWEST CORNER OF SAID LOT 5.  
 VENCE 29 89°20'47" E A DISTANCE OF 102.18 FEET TO A POINT ON THE SOUTHWEST CORNER OF SAID LOT 5.  
 VENCE 30 89°20'47" E A DISTANCE OF 102.18 FEET TO A POINT ON THE SOUTHWEST CORNER OF SAID LOT 5.  
 VENCE 31 89°20'47" E A DISTANCE OF 102.18 FEET TO A POINT ON THE SOUTHWEST CORNER OF SAID LOT 5.  
 VENCE 32 89°20'47" E A DISTANCE OF 102.18 FEET TO A POINT ON THE SOUTHWEST CORNER OF SAID LOT 5.  
 VENCE 33 89°20'47" E A DISTANCE OF 102.18 FEET TO A POINT ON THE SOUTHWEST CORNER OF SAID LOT 5.  
 VENCE 34 89°20'47" E A DISTANCE OF 102.18 FEET TO A POINT ON THE SOUTHWEST CORNER OF SAID LOT 5.  
 VENCE 35 89°20'47" E A DISTANCE OF 102.18 FEET TO A POINT ON THE SOUTHWEST CORNER OF SAID LOT 5.  
 VENCE 36 89°20'47" E A DISTANCE OF 102.18 FEET TO A POINT ON THE SOUTHWEST CORNER OF SAID LOT 5.  
 VENCE 37 89°20'47" E A DISTANCE OF 102.18 FEET TO A POINT ON THE SOUTHWEST CORNER OF SAID LOT 5.  
 VENCE 38 89°20'47" E A DISTANCE OF 102.18 FEET TO A POINT ON THE SOUTHWEST CORNER OF SAID LOT 5.

**NOTE:** THIS EXHIBIT REFLECTS ONLY NASH OWNERSHIP WITHIN CASCADIA PHASE 1.  


REVISIONS	
1	REVISION OF LEGAL DESCRIPTION, B.L.N. 27.02/2016.

### EXHIBIT OF PHASE 1 BOUNDARY

MacKay Spósito  
 1825 BE TECH CENTER DRIVE, SUITE 340  
 MARKHAM, ONTARIO L3R 9V7  
 PORTLAND, OREGON 97204  
 PHONE (416) 499-0885

DATE: MAY 19, 2016  
 SCALE: AS SHOWN  
 DRAWN BY: M.S.P.  
 DATE PLOTTED: 5/20/16  
 FILE: CASCADIA\_PHASE1\_EXHIBIT

**16025**  
 SHEET  
**1 OF 1**