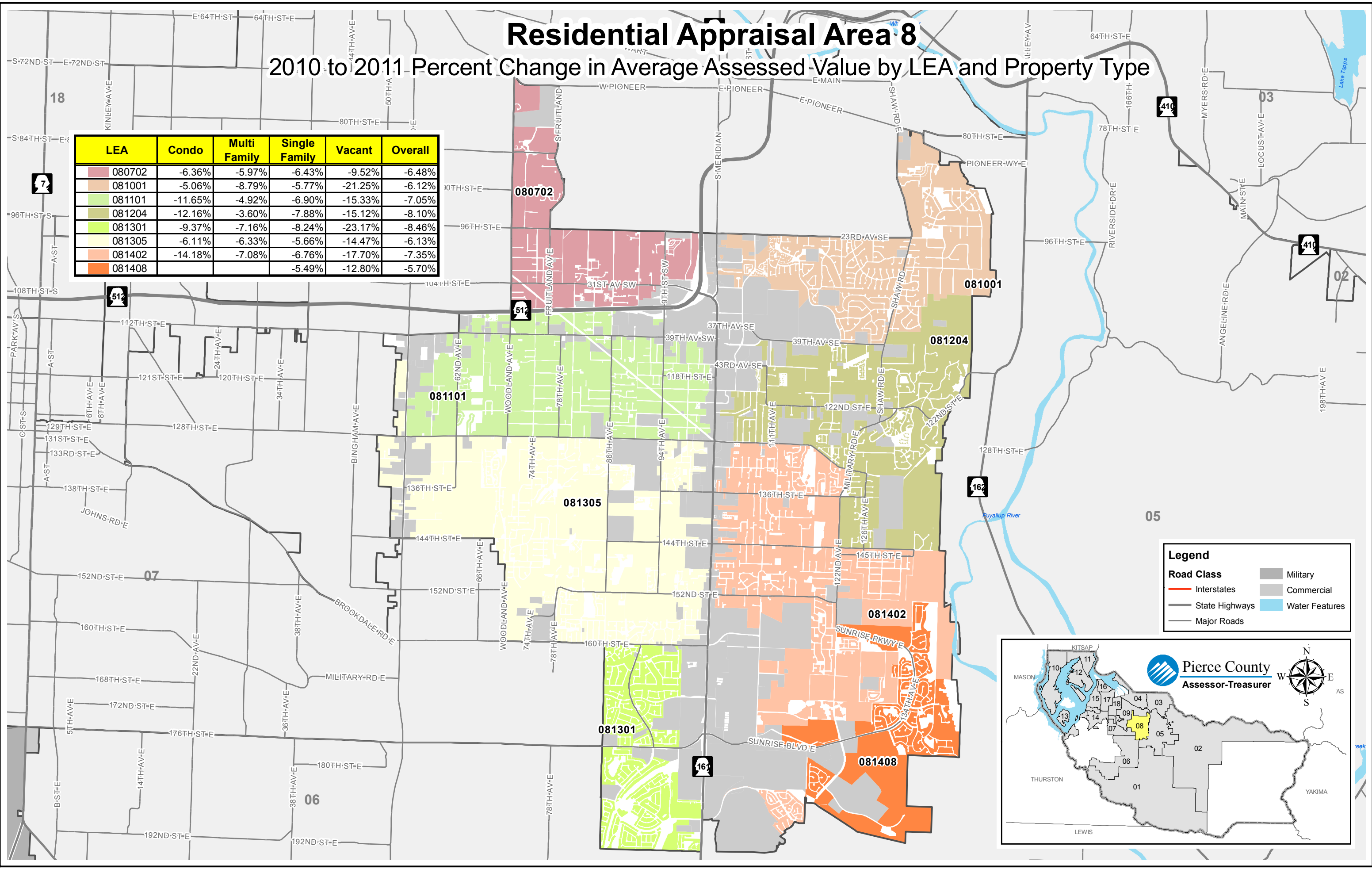


Residential Appraisal Area 8

2010 to 2011 Percent Change in Average Assessed Value by LEA and Property Type

| LEA | Condo | Multi Family | Single Family | Vacant | Overall |
|--------|---------|--------------|---------------|---------|---------|
| 080702 | -6.36% | -5.97% | -6.43% | -9.52% | -6.48% |
| 081001 | -5.06% | -8.79% | -5.77% | -21.25% | -6.12% |
| 081101 | -11.65% | -4.92% | -6.90% | -15.33% | -7.05% |
| 081204 | -12.16% | -3.60% | -7.88% | -15.12% | -8.10% |
| 081301 | -9.37% | -7.16% | -8.24% | -23.17% | -8.46% |
| 081305 | -6.11% | -6.33% | -5.66% | -14.47% | -6.13% |
| 081402 | -14.18% | -7.08% | -6.76% | -17.70% | -7.35% |
| 081408 | | | -5.49% | -12.80% | -5.70% |



Legend

Road Class

- Interstates
- State Highways
- Major Roads
- Military
- Commercial
- Water Features

Pierce County Assessor-Treasurer

Map showing appraisal areas 01 through 18. Area 08 is highlighted in yellow.