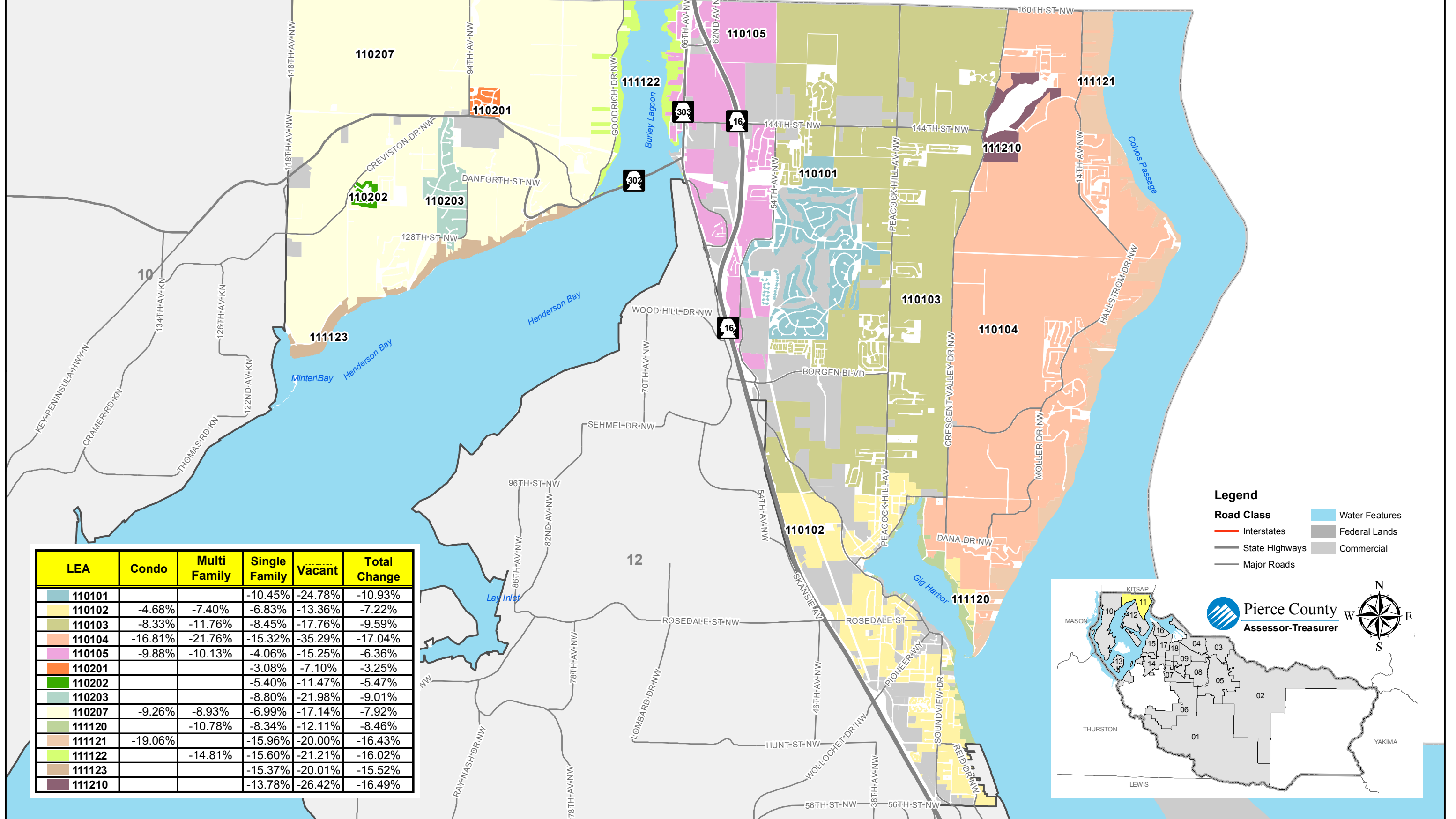


Residential Appraisal Area 11

2009 to 2010 Percent Change in Average Assessed Value by LEA and Property Type



LEA	Condo	Multi Family	Single Family	Vacant	Total Change
110101			-10.45%	-24.78%	-10.93%
110102	-4.68%	-7.40%	-6.83%	-13.36%	-7.22%
110103	-8.33%	-11.76%	-8.45%	-17.76%	-9.59%
110104	-16.81%	-21.76%	-15.32%	-35.29%	-17.04%
110105	-9.88%	-10.13%	-4.06%	-15.25%	-6.36%
110201			-3.08%	-7.10%	-3.25%
110202			-5.40%	-11.47%	-5.47%
110203			-8.80%	-21.98%	-9.01%
110207	-9.26%	-8.93%	-6.99%	-17.14%	-7.92%
111120		-10.78%	-8.34%	-12.11%	-8.46%
111121	-19.06%		-15.96%	-20.00%	-16.43%
111122		-14.81%	-15.60%	-21.21%	-16.02%
111123			-15.37%	-20.01%	-15.52%
111210			-13.78%	-26.42%	-16.49%

Legend

- Road Class**
- Interstates
 - State Highways
 - Major Roads
- Water Features**
- Water Features
 - Federal Lands
 - Commercial

Pierce County Assessor-Treasurer

