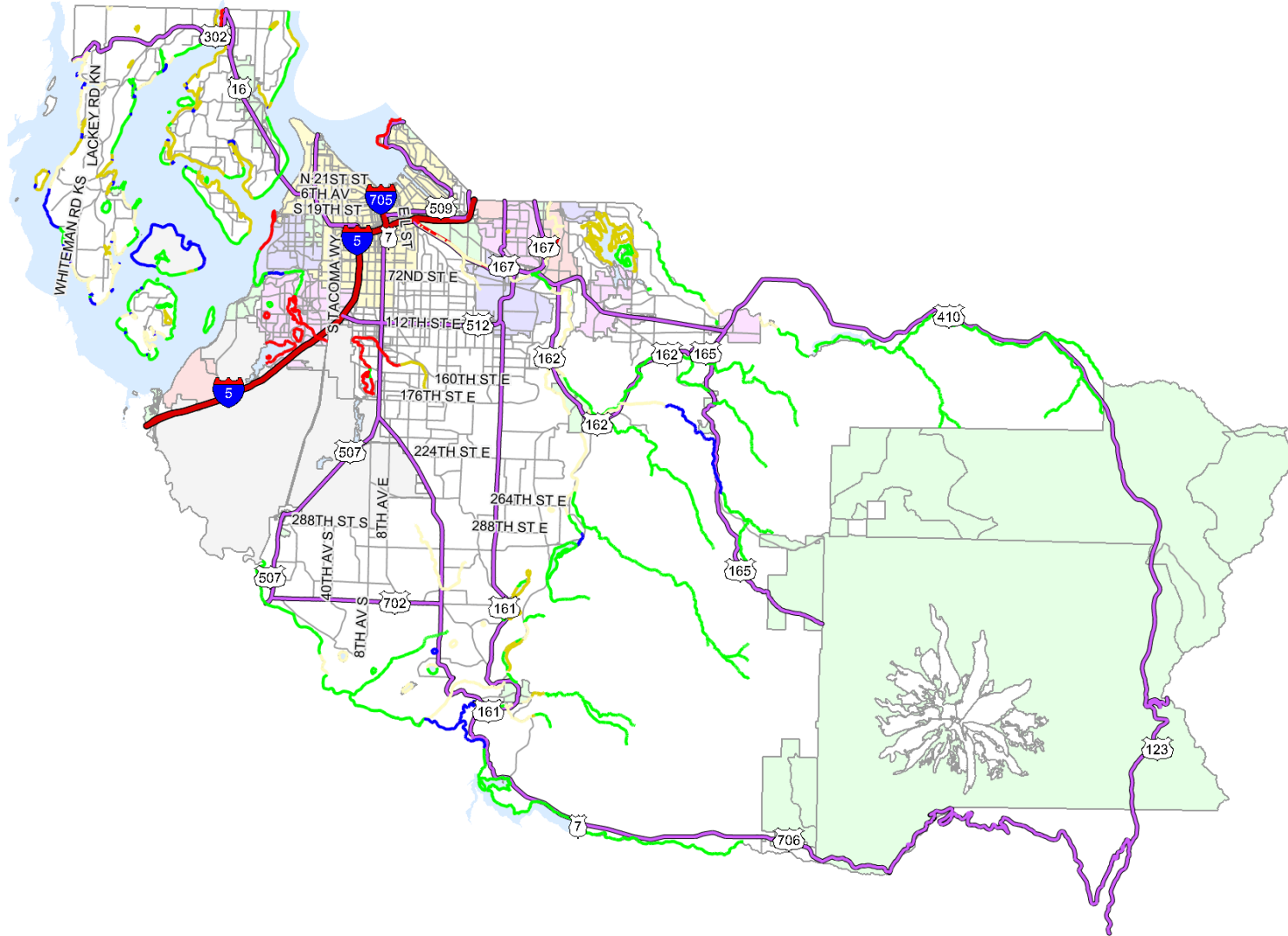


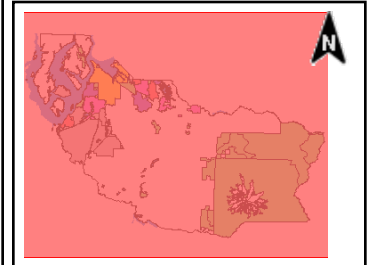
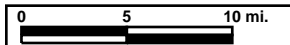
# Shoreline Environments



## Map Legend

### Shoreline Environments

-  Urban
-  Rural /Residential
-  Rural
-  Natural
-  Conservancy
- Major Roads**
-  Interstate
-  Limited Access State Routes
-  Other State Routes
-  Ramps
-  Major Arterial
-  Collector
- Pierce County Basemap**
-  Unincorporated County



Printed: 3/23/07 1:51 PM

Planning and Land Services



Pierce County

Geographic Information Services

The map features are approximate and are intended only to provide an indication of said feature. Additional areas that have not been mapped may be present. This is not a survey. The County assumes no liability for variations ascertained by actual survey. All data is expressly provided AS IS and WITH ALL FAULTS. The County makes no warranty of fitness for a particular purpose.