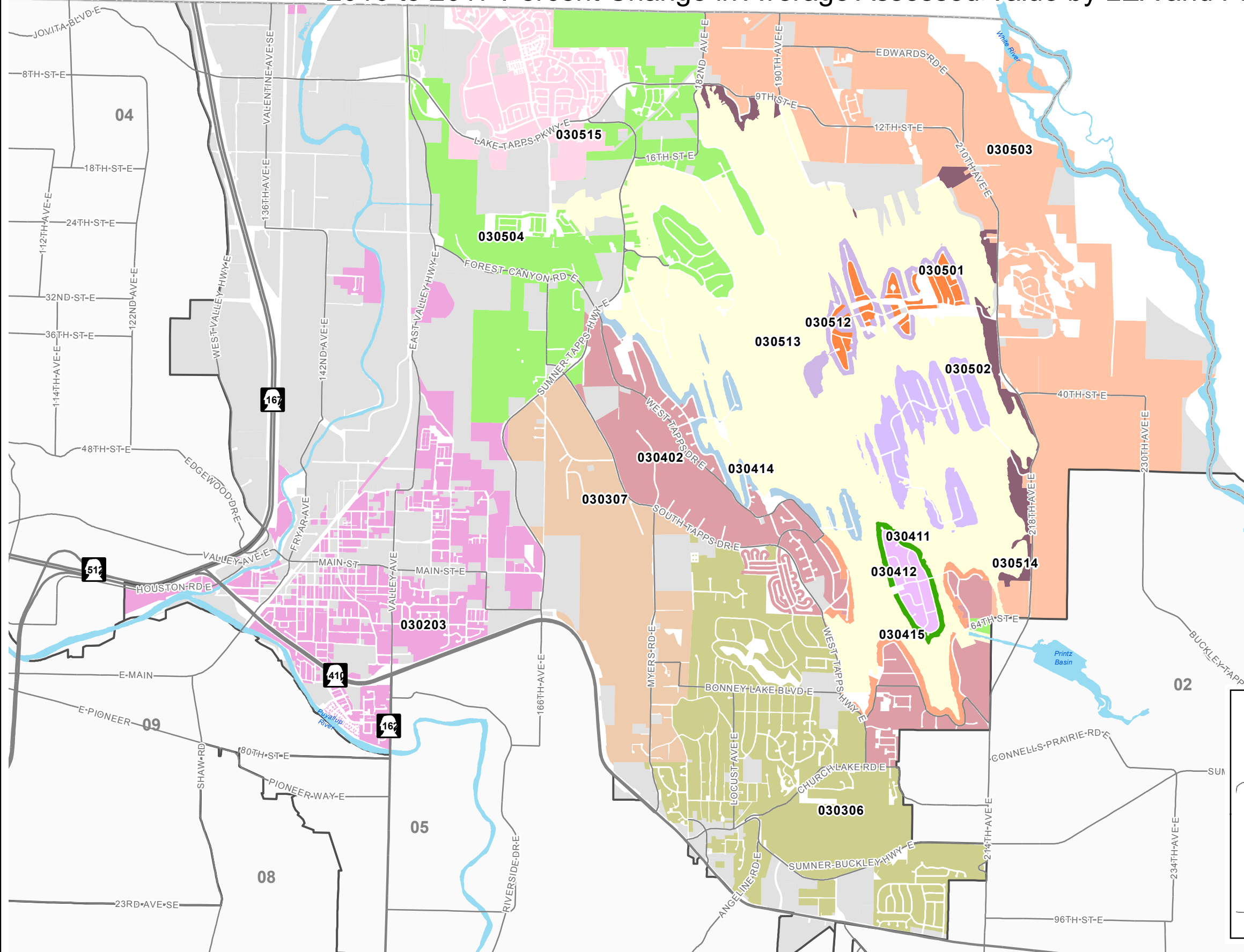


Residential Appraisal Area 3

2016 to 2017 Percent Change in Average Assessed Value by LEA and Property Type



LEA	Condo	Multi Family	Single Family	Vacant	Overall
030203	14.98%	20.74%	16.75%	20.02%	16.96%
030306	30.56%	21.09%	16.73%	23.44%	17.19%
030307		18.45%	13.18%	15.78%	13.43%
030402		14.17%	12.64%	13.07%	12.67%
030411	14.24%	12.71%	11.90%	18.37%	12.12%
030412			13.81%	13.11%	13.80%
030414			12.02%	10.38%	12.00%
030415		13.68%	13.64%	10.59%	13.60%
030501			10.85%	11.16%	10.85%
030502			3.66%	0.92%	3.52%
030503		16.00%	12.75%	9.55%	12.69%
030504		14.67%	10.87%	9.52%	10.85%
030512			8.09%	11.03%	8.13%
030513		9.84%	10.22%	5.73%	10.05%
030514			7.77%	5.36%	7.69%
030515	11.42%		10.62%	10.41%	10.90%

Legend

Road Class

- Interstates
- State Highways
- Major Roads
- Commercial
- Water Features

Pierce County
Assessor-Treasurer

Map showing Pierce County appraisal areas (01-18) and surrounding counties: Mason, Kitsap, Thurston, Lewis, and Yakima. A compass rose is also present.