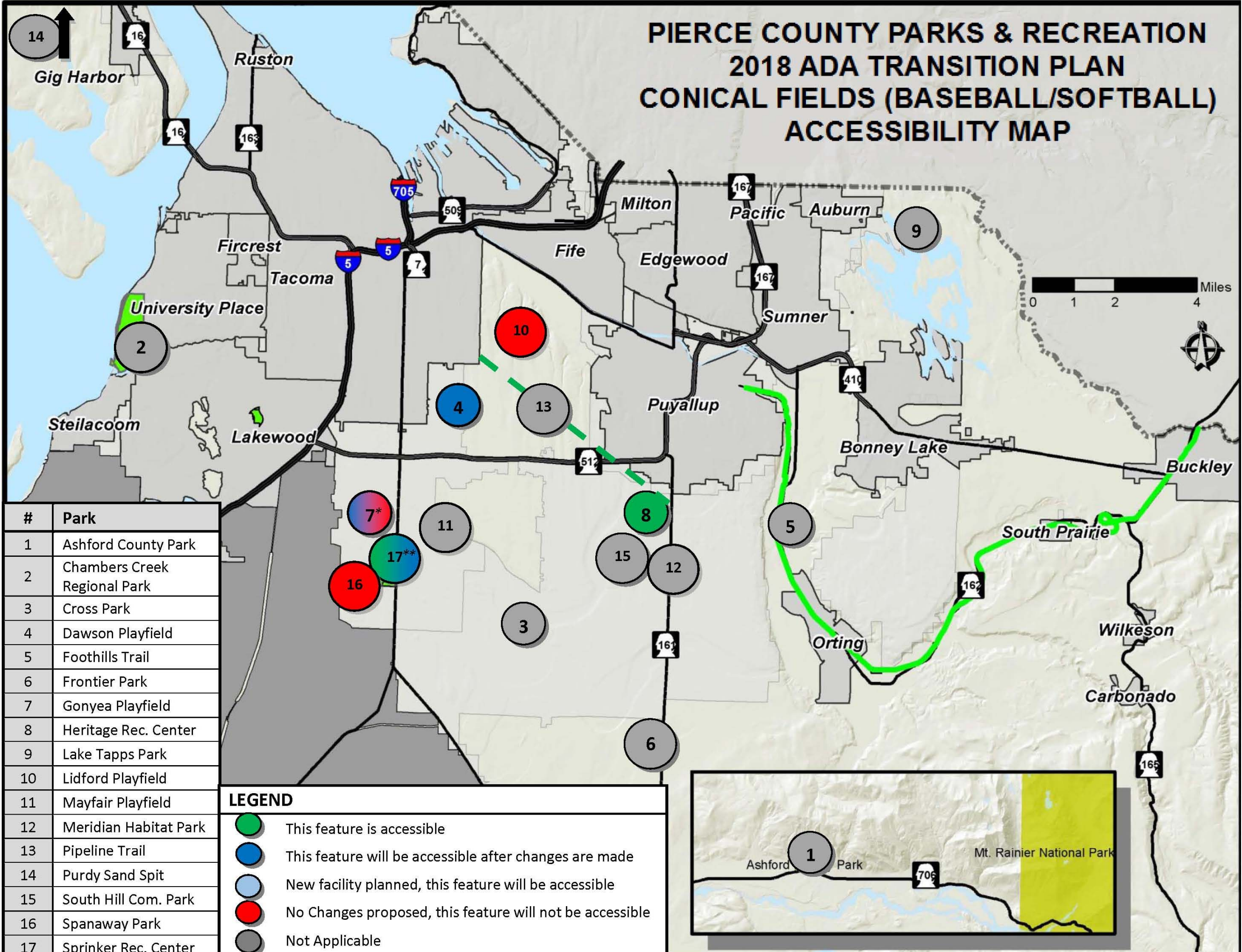


PIERCE COUNTY PARKS & RECREATION 2018 ADA TRANSITION PLAN CONICAL FIELDS (BASEBALL/SOFTBALL) ACCESSIBILITY MAP



#	Park
1	Ashford County Park
2	Chambers Creek Regional Park
3	Cross Park
4	Dawson Playfield
5	Foothills Trail
6	Frontier Park
7	Gonyea Playfield
8	Heritage Rec. Center
9	Lake Tapps Park
10	Lidford Playfield
11	Mayfair Playfield
12	Meridian Habitat Park
13	Pipeline Trail
14	Purdy Sand Spit
15	South Hill Com. Park
16	Spanaway Park
17	Sprinker Rec. Center

LEGEND

- This feature is accessible
- This feature will be accessible after changes are made
- New facility planned, this feature will be accessible
- No Changes proposed, this feature will not be accessible
- Not Applicable



*Gonyea Playfield has 2 ballfields that will be made accessible and 3 that are not accessible. **Sprinker Rec Center has 2 ballfields that are accessible and 5 that will be made accessible.