



AIRPORT AND FERRY DIVISION MEMORANDUM

January 30, 2020

Subject: December 2019 Ferry Performance Measures

This memorandum and the attached charts provide the Pierce County Ferry Performance Measures for December 2019. All ridership numbers are estimated based on ticket sales and represent both directions of travel.

Fare Revenue

MONTH	FARE REVENUE	BUDGETED FARE REVENUE
December 2019	\$ 211,720	\$225,000

Monthly revenues reported in the Performance Measures December vary based on the posting date used by Pierce County Finance Department.

December 2019 Ridership

RIDERSHIP CATEGORY	RIDERSHIP COUNT	PERCENT DIFFERENCE FROM 2018	DIFFERENCE IN RIDERS FROM 2018
YTD Total Ridership	477,156	4.76%	21,684
Monthly Total Ridership	35,596	3.79%	1,300
Walk-on Adults	4,300	(1.47%)	-64
Walk-on Youth	3,458	(15.04%)	-612
Walk-on Senior / Disabled	3,356	6.27%	198
Walk-on Commuters	3,728	13.04%	430
Vehicles up to 22' with Driver	4,550	(1.34%)	-62
Vehicles up to 22' with Commuter	12,760	9.74%	1,132
Vehicles up to 22' with Senior/Disabled	1,864	6.15%	108
Commuter Motorcycles	20	(23.08%)	-6

Vehicles Left Behind in December

VEHICLES LEFT BEHIND 2019	VEHICLES LEFT BEHIND 2018	% CHG FROM 2018
431	148	66%

Respectfully submitted,
 Nick Lacsina
 Management Analyst
 Pierce County Planning & Public Works
 D: 253.798.6355 | nick.lacsina@piercecountywa.gov

Attachments:
 - 2019 Ridership
 - 2018 Ridership
 - Monthly ridership comparison
 - YTD ridership comparison
 - Monthly Ticket Sales

Pierce County Ferry - 2019 Ridership Anderson & Ketron Islands

Combined Islands	Jan-19 OUT	Feb-19 OUT	Mar-19 OUT	Apr-19 OUT	May-19 OUT	Jun-19 OUT	Jul-19 OUT	Aug-19 OUT	Sep-19 OUT	Oct-19 OUT	Nov-19 OUT	Dec-19 OUT	2019 TOTALS	
Passengers														
Adults	3,404	2,622	4,346	4,766	5,972	5,958	9,642	9,618	5,124	4,472	4,532	4,300	64,756	Total Passengers 218,902
Youth (Ages 6-18)	3,592	2,880	4,348	3,970	5,566	4,852	7,246	7,466	4,192	3,780	3,708	3,458	55,058	
Children (Under Age 6)	338	234	516	704	906	952	1,764	1,896	674	406	432	470	9,292	
Senior/Disabled Citizens	3,066	2,380	3,232	3,324	4,044	4,108	4,948	5,124	3,526	3,666	3,312	3,356	44,086	
Commuter Passengers	3,362	2,724	3,496	3,242	3,874	4,044	4,588	4,562	4,012	4,444	3,634	3,728	45,710	
Monthly Passenger Total	13,762	10,840	15,938	16,006	20,362	19,914	28,188	28,666	17,528	16,768	15,618	15,312	218,902	
Vehicles														
Up to 22' and Driver	3,790	3,032	5,046	4,334	5,942	5,530	8,420	8,724	4,724	4,644	4,760	4,550	63,496	Total Vehicles 251,592
Up to 22' and Sr/Disabled	1,692	1,258	1,812	1,592	2,036	2,026	2,436	2,682	1,896	2,154	2,112	1,864	23,560	
Up to 22' and Commuter	12,082	9,996	12,350	11,272	14,138	13,976	14,406	14,208	12,948	13,498	12,486	12,760	154,120	
Over 22' to under 30'	218	216	294	246	388	320	338	382	232	304	218	182	3,338	
30' to under 40'	198	148	276	222	340	284	338	380	270	268	192	176	3,092	
40' to under 50'	60	38	60	64	100	82	104	168	68	80	54	44	922	
50' to under 60'	14	10	28	20	42	28	58	74	18	20	34	20	366	
60' to under 70'	22	14	32	22	38	28	34	38	44	26	20	16	334	
70' to under 80'	6	4	8	2	4	2	4	38	16	6	8	16	114	
80' to under 90'	0	0	0	2	0	2	0	0	0	2	0	0	6	
90' and greater	0	0	0	0	0	0	0	0	0	0	0	0	0	
Motorcycle w/Driver	28	8	56	68	86	82	94	76	34	40	16	4	592	
Motorcycle w/Commuter	36	32	114	154	226	196	222	248	144	80	52	20	1,524	
3-Wheel Vehicles	12	4	8	12	8	12	20	10	12	12	16	2	128	
Monthly Vehicle Total	18,158	14,760	20,084	18,010	23,348	22,568	26,474	27,028	20,406	21,134	19,968	19,654	251,592	
Non-Exempt Total														
Monthly Non-Exempt Total	31,920	25,600	36,022	34,016	43,710	42,482	54,662	55,694	37,934	37,902	35,586	34,966	470,494	470,494
Exempt														
Exempt Vehicles	326	300	328	508	580	602	962	840	544	560	482	630	6,662	Total Exempt 6,662
Exempt Passengers	0	0	0	0	0	0	0	0	0	0	0	0	0	
Monthly Exempt Total	326	300	328	508	580	602	962	840	544	560	482	630	6,662	
Other - NOT INCLUDED														
Cars Left Behind	95	139	269	416	920	763	2,074	2,423	827	345	449	431	9,151	
Totals	32,246	25,900	36,350	34,524	44,290	43,084	55,624	56,534	38,478	38,462	36,068	35,596	477,156	
Change from 2018	9.44%	-4.58%	8.02%	5.55%	9.79%	0.40%	0.95%	12.74%	0.17%	5.38%	3.65%	3.79%	4.90%	

Pierce County Planning & Public Works
Airport and Ferry Division
9850 64th St W
University Place, WA 98467

Total Passengers	218,902
Total Vehicles	251,592
Total Exempt	6,662
Total Ridership	477,156

Pierce County Ferry - 2018 Ridership Anderson & Ketron Islands

Combined Islands	Jan-18 OUT	Feb-18 OUT	Mar-18 OUT	Apr-18 OUT	May-18 OUT	Jun-18 OUT	Jul-18 OUT	Aug-18 OUT	Sep-18 OUT	Oct-18 OUT	Nov-18 OUT	Dec-18 OUT	2018 TOTALS	
Passengers														
Adults	3,132	2,942	4,066	3,976	5,508	6,284	10,392	8,178	5,254	3,886	4,234	4,364	62,216	Total Passengers
Youth (Ages 6-18)	3,102	2,970	3,684	3,312	4,794	4,790	7,874	6,700	4,508	4,386	4,110	4,070	54,300	
Children (Under Age 6)	240	246	376	414	862	944	1,242	1,314	654	348	410	540	7,590	
Senior/Disabled Citizens	2,806	2,546	3,120	3,132	3,600	3,936	4,680	4,436	3,704	3,538	3,318	3,158	41,974	
Commuter Passengers	3,146	2,746	3,092	2,978	3,484	3,792	3,958	4,020	3,678	3,786	3,388	3,298	41,366	
Monthly Passenger Total	12,426	11,450	14,338	13,812	18,248	19,746	28,146	24,648	17,798	15,944	15,460	15,430	207,446	207,446
Vehicles														
Up to 22' and Driver	3,670	3,504	4,768	6,500	5,498	5,850	8,758	7,774	5,014	4,232	4,636	4,612	64,816	Total Vehicles
Up to 22' and Sr/Disabled	1,648	1,468	1,974	2,092	2,208	2,186	2,624	2,448	1,734	1,800	1,712	1,756	23,650	
Up to 22' and Commuter	11,094	9,970	11,368	9,266	12,878	13,416	13,398	13,588	12,630	13,304	12,062	11,628	144,602	
Over 22' to under 30'	218	176	230	258	304	278	364	254	240	240	232	192	2,986	
30' to under 40"	162	140	236	178	262	324	312	374	298	244	192	160	2,882	
40' to under 50'	44	28	82	54	120	102	122	100	48	52	56	40	848	
50' to under 60'	10	22	24	20	24	38	50	22	30	24	16	8	288	
60' to under 70'	18	14	26	32	38	24	26	22	26	34	32	14	306	
70' to under 80'	20	10	18	12	32	14	12	10	12	18	4	8	170	
80' to under 90'	4	0	0	0	0	0	0	0	0	0	0	0	4	
90' and greater	0	0	0	0	0	0	0	0	0	0	0	0	0	
Motorcycle w/Driver	16	30	32	28	90	86	112	76	84	18	94	10	676	
Motorcycle w/Commuter	28	20	94	74	118	146	218	134	114	154	12	26	1,138	
3-Wheel Vehicles	4	6	14	8	12	20	24	24	24	10	8	6	160	
Monthly Vehicle Total	16,936	15,388	18,866	18,522	21,584	22,484	26,020	24,826	20,254	20,130	19,056	18,460	242,526	242,526
Non-Exempt Total														
Monthly Non-Exempt Total	14,681	13,419	16,602	16,167	19,916	21,115	27,083	24,737	19,026	18,037	17,258	16,945	224,986	449,972
Exempt														
Exempt Vehicles	102	304	446	376	508	684	936	670	360	426	282	406	5,500	Total Exempt
Exempt Passengers	0	0	0	0	0	0	0	0	0	0	0	0	0	
Monthly Exempt Total	102	304	446	376	508	684	936	670	360	426	282	406	5,500	
Other - NOT INCLUDED														
Cars Left Behind	193	105	244	338	581	1,011	1,969	910	700	452	274	148	6,925	
Totals	29,464	27,142	33,650	32,710	40,340	42,914	55,102	50,144	38,412	36,500	34,798	34,296	455,472	
Change from 2017	5.71%	18.58%	7.77%	2.79%	11.31%	17.40%	29.23%	11.35%	13.15%	22.96%	11.57%	7.43%	13.52%	

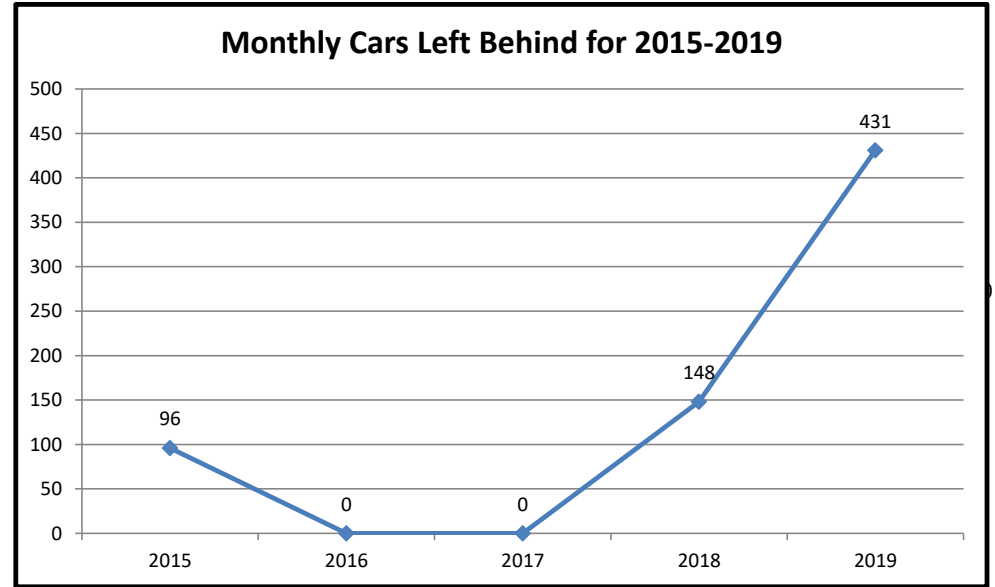
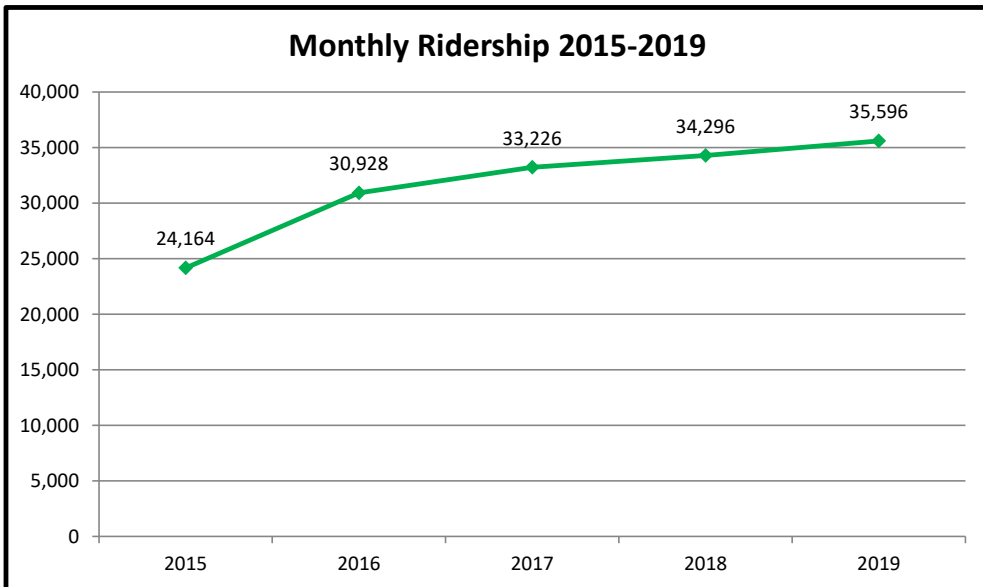
Pierce County Planning & Public Works
Airport and Ferry Division
9850 64th St W University
Place, WA 98467

Total Passengers	207,446
Total Vehicles	242,526
Total Exempt	5,500
Total Ridership	455,472

Pierce County Ferry - 2015 to 2019 Monthly Ridership For the Month of December

Combined Islands	2015	2016	2017	2018	2019	2015-2019 AVERAGES
Passengers						
Monthly Passenger Total	11,002	13,854	14,538	15,430	15,312	14,027
Vehicles						
Monthly Vehicle Total	13,132	17,042	18,310	18,460	19,654	17,320
Exempt						
Monthly Exempt Total	30	32	378	406	630	295
Other - NOT INCLUDED						
Monthly Cars Left Behind	96	0	0	148	431	135
Totals	24,164	30,928	33,226	34,296	35,596	31,642

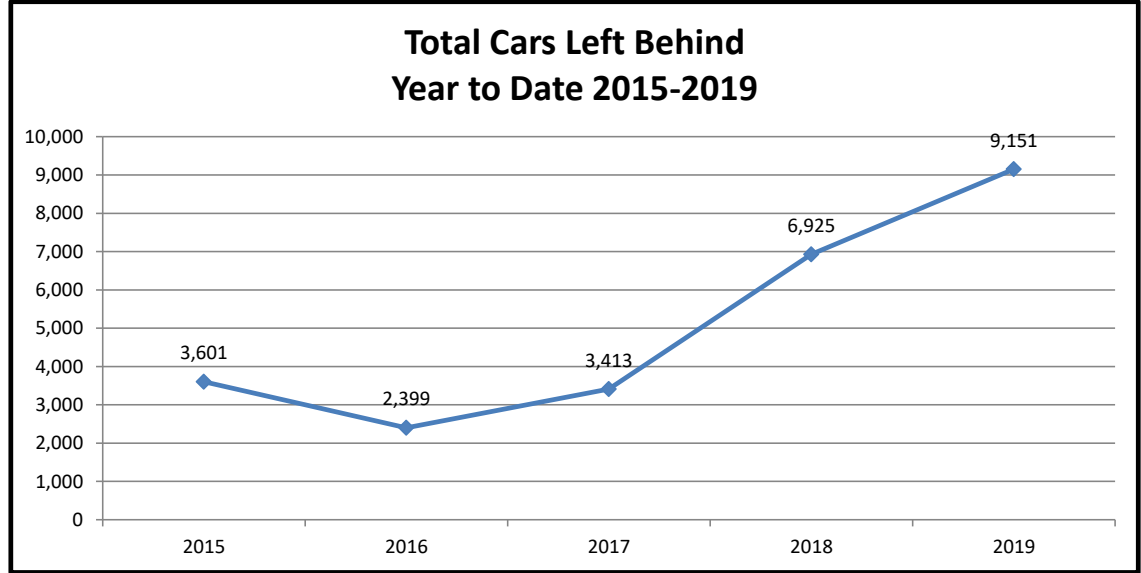
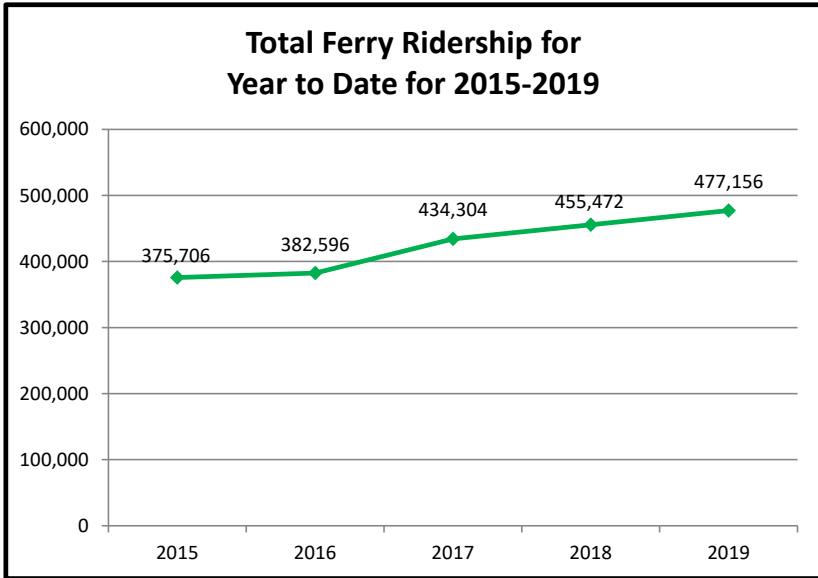
**Anderson & Ketron
Islands**



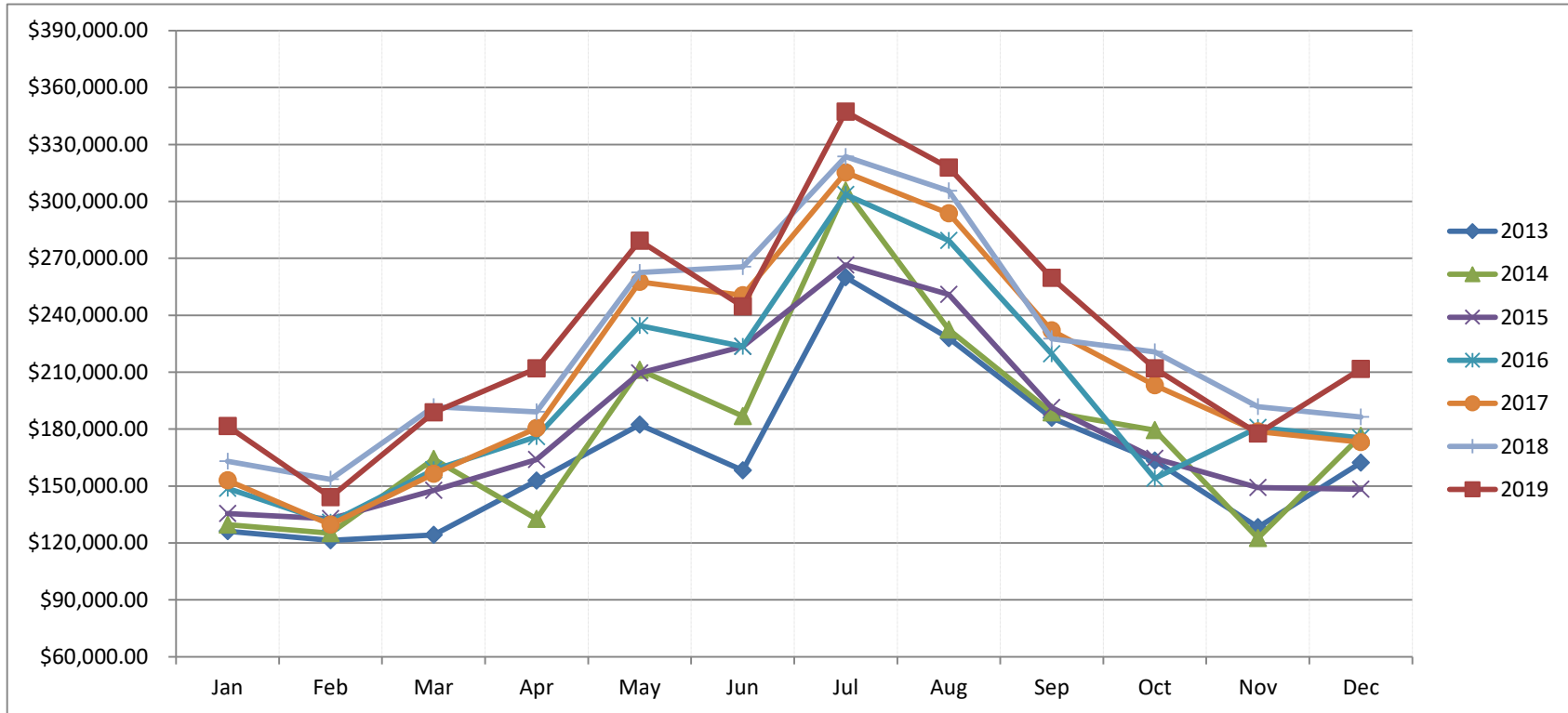
Pierce County Ferry 2015-2019 Year to Date Totals Through December

Combined Islands	2015	2016	2017	2018	2019	2015-2019 AVERAGES
Passengers						
YTD Passenger Total	177,174	178,588	197,800	207,446	218,902	195,982
Vehicles						
YTD Vehicle Total	197,718	203,404	231,344	242,526	251,592	225,317
Exempt						
YTD Exempt Total	814	604	5,160	5,500	6,662	3,748
Other - NOT INCLUDED						
Cars Left Behind	3,601	2,399	3,413	6,925	9,151	5,098
Totals	375,706	382,596	434,304	455,472	477,156	425,047

**Anderson & Ketron
Island**



Pierce County Ferry System Ticket Sales by Month 2013-2019



Month	2013	2014	2015	2016	2017	2018	2019
Jan	\$ 126,194.90	\$ 129,625.00	\$ 135,455.00	\$ 148,753.95	\$ 152,936.35	\$ 163,007.30	\$ 181,627.00
Feb	\$ 121,360.59	\$ 125,146.00	\$ 132,736.00	\$ 130,783.20	\$ 129,663.00	\$ 153,516.00	\$ 144,150.00
Mar	\$ 124,175.22	\$ 164,208.00	\$ 147,762.00	\$ 158,542.65	\$ 156,493.00	\$ 191,868.19	\$ 188,724.35
Apr	\$ 152,858.25	\$ 132,604.00	\$ 163,957.70	\$ 176,019.27	\$ 180,457.00	\$ 189,160.92	\$ 211,979.00
May	\$ 182,381.05	\$ 211,172.00	\$ 209,581.63	\$ 234,493.20	\$ 257,589.00	\$ 262,604.70	\$ 279,249.00
Jun	\$ 158,264.21	\$ 186,820.00	\$ 223,529.80	\$ 223,570.55	\$ 250,428.00	\$ 265,570.00	\$ 244,633.00
Jul	\$ 260,026.00	\$ 305,702.00	\$ 266,512.69	\$ 303,626.22	\$ 315,273.00	\$ 323,590.00	\$ 347,239.00
Aug	\$ 227,964.00	\$ 232,362.00	\$ 250,957.44	\$ 279,322.38	\$ 293,666.00	\$ 305,517.00	\$ 317,752.00
Sep	\$ 185,973.00	\$ 188,716.00	\$ 191,350.91	\$ 219,709.25	\$ 232,005.00	\$ 227,613.00	\$ 259,714.00
Oct	\$ 163,319.00	\$ 179,409.00	\$ 164,579.42	\$ 153,994.35	\$ 203,140.00	\$ 220,739.00	\$ 211,919.00
Nov	\$ 128,319.00	\$ 122,535.00	\$ 149,226.31	\$ 180,780.35	\$ 178,766.00	\$ 191,804.00	\$ 177,644.00
Dec	\$ 162,283.00	\$ 176,474.00	\$ 148,272.10	\$ 175,444.45	\$ 173,176.00	\$ 186,402.00	\$ 211,720.00
Totals	\$ 1,993,118.22	\$ 2,154,773.00	\$ 2,183,921.00	\$ 2,385,039.82	\$ 2,523,592.35	\$ 2,681,392.11	\$ 2,776,350.35