



**AIRPORT AND FERRY DIVISION MEMORANDUM**

**March 24, 2020**

*Subject: January 2020 Ferry Performance Measures*

This memorandum and the attached charts provide the Pierce County Ferry Performance Measures for January 2020. All ridership numbers are estimated based on ticket sales and represent both directions of travel.

**Fare Revenue**

MONTH	FARE REVENUE	BUDGETED FARE REVENUE
January	\$ 188,014	\$225,000

*Monthly revenues reported in the Performance Measures January vary based on the posting date used by Pierce County Finance Department.*

**January 2020 Ridership**

RIDERSHIP CATEGORY	RIDERSHIP COUNT	PERCENT DIFFERENCE FROM 2019	DIFFERENCE IN RIDERS FROM 2019
YTD Total Ridership	32,091	(0.48%)	-155
Monthly Total Ridership	32,091	(0.48%)	-155
Walk-on Adults	3,268	(4.00%)	-136
Walk-on Youth	3,104	(13.59%)	-488
Walk-on Senior / Disabled	2,974	(3.00%)	-92
Walk-on Commuters	3,582	6.54%	220
Vehicles up to 22' with Driver	3,844	1.42%	54
Vehicles up to 22' with Commuter	12,472	3.23%	390
Vehicles up to 22' with Senior/Disabled	1,800	6.38%	108
Commuter Motorcycles	18	(50.00%)	-18

**Vehicles Left Behind in January**

VEHICLES LEFT BEHIND 2020	VEHICLES LEFT BEHIND 2019	% CHG FROM 2019
335	95	72%

Questions/Comments?  
 Email: PCFERRY@piercecountywa.gov  
 Phone: 253.798.6355

**Attachments:**  
 - 2019 Ridership  
 - 2019 Ridership  
 - Monthly ridership comparison  
 - YTD ridership comparison  
 - Monthly Ticket Sales

## Pierce County Ferry - 2020 Ridership Anderson & Ketron Islands

Combined Islands	Jan-20 OUT	Feb-20 OUT	Mar-20 OUT	Apr-20 OUT	May-20 OUT	Jun-20 OUT	Jul-20 OUT	Aug-20 OUT	Sep-20 OUT	Oct-20 OUT	Nov-20 OUT	Dec-20 OUT	2020 TOTALS	
<b>Passengers</b>														
Adults	3,268	0	0	0	0	0	0	0	0	0	0	0	3,268	<b>Total Passengers</b>  13,228
Youth (Ages 6-18)	3,104	0	0	0	0	0	0	0	0	0	0	0	3,104	
Children (Under Age 6)	300	0	0	0	0	0	0	0	0	0	0	0	300	
Senior/Disabled Citizens	2,974	0	0	0	0	0	0	0	0	0	0	0	2,974	
Commuter Passengers	3,582	0	0	0	0	0	0	0	0	0	0	0	3,582	
<i>Monthly Passenger Total</i>	13,228	0	0	0	0	0	0	0	0	0	0	0	13,228	
<b>Vehicles</b>														
Up to 22' and Driver	3,844	0	0	0	0	0	0	0	0	0	0	0	3,844	<b>Total Vehicles</b>  18,616
Up to 22' and Sr/Disabled	1,800	0	0	0	0	0	0	0	0	0	0	0	1,800	
Up to 22' and Commuter	12,472	0	0	0	0	0	0	0	0	0	0	0	12,472	
Over 22' to under 30'	186	0	0	0	0	0	0	0	0	0	0	0	186	
30' to under 40"	210	0	0	0	0	0	0	0	0	0	0	0	210	
40' to under 50'	40	0	0	0	0	0	0	0	0	0	0	0	40	
50' to under 60'	4	0	0	0	0	0	0	0	0	0	0	0	4	
60' to under 70'	16	0	0	0	0	0	0	0	0	0	0	0	16	
70' to under 80'	16	0	0	0	0	0	0	0	0	0	0	0	16	
80' to under 90'	0	0	0	0	0	0	0	0	0	0	0	0	0	
90' and greater	0	0	0	0	0	0	0	0	0	0	0	0	0	
Motorcycle w/Driver	6	0	0	0	0	0	0	0	0	0	0	0	6	
Motorcycle w/Commuter	18	0	0	0	0	0	0	0	0	0	0	0	18	
3-Wheel Vehicles	4	0	0	0	0	0	0	0	0	0	0	0	4	
<i>Monthly Vehicle Total</i>	18,616	0	0	0	0	0	0	0	0	0	0	0	18,616	
<b>Non-Exempt Total</b>														
<i>Monthly Non-Exempt Total</i>	31,844	0	0	0	0	0	0	0	0	0	0	0	31,844	31,844
<b>Exempt</b>														
Exempt Vehicles	247	0	0	0	0	0	0	0	0	0	0	0	247	<b>Total Exempt</b>  247
Exempt Passengers	0	0	0	0	0	0	0	0	0	0	0	0	0	
<i>Monthly Exempt Total</i>	247	0	0	0	0	0	0	0	0	0	0	0	247	
<b>Other - NOT INCLUDED</b>														
Cars Left Behind	335	0	0	0	0	0	0	0	0	0	0	0	335	
<b>Totals</b>	<b>32,091</b>	<b>0</b>	<b>0</b>	<b>0</b>	<b>0</b>	<b>0</b>	<b>0</b>	<b>0</b>	<b>0</b>	<b>0</b>	<b>0</b>	<b>0</b>	<b>32,091</b>	
Change from 2019	-0.48%													-0.48%

Pierce County Planning & Public Works  
Airport and Ferry Division  
9850 64th St W  
University Place, WA 98467

<b>Total Passengers</b>	<b>13,228</b>
<b>Total Vehicles</b>	<b>18,616</b>
<b>Total Exempt</b>	<b>247</b>
<b>Total Ridership</b>	<b>32,091</b>

## Pierce County Ferry - 2019 Ridership Anderson & Ketron Islands

Combined Islands	Jan-19 OUT	Feb-19 OUT	Mar-19 OUT	Apr-19 OUT	May-19 OUT	Jun-19 OUT	Jul-19 OUT	Aug-19 OUT	Sep-19 OUT	Oct-19 OUT	Nov-19 OUT	Dec-19 OUT	2019 TOTALS	
<b>Passengers</b>														
Adults	3,404	2,622	4,346	4,766	5,972	5,958	9,642	9,618	5,124	4,472	4,532	4,300	64,756	<b>Total Passengers</b>
Youth (Ages 6-18)	3,592	2,880	4,348	3,970	5,566	4,852	7,246	7,466	4,192	3,780	3,708	3,458	55,058	
Children (Under Age 6)	338	234	516	704	906	952	1,764	1,896	674	406	432	470	9,292	
Senior/Disabled Citizens	3,066	2,380	3,232	3,324	4,044	4,108	4,948	5,124	3,526	3,666	3,312	3,356	44,086	
Commuter Passengers	3,362	2,724	3,496	3,242	3,874	4,044	4,588	4,562	4,012	4,444	3,634	3,728	45,710	
<b>Monthly Passenger Total</b>	<b>13,762</b>	<b>10,840</b>	<b>15,938</b>	<b>16,006</b>	<b>20,362</b>	<b>19,914</b>	<b>28,188</b>	<b>28,666</b>	<b>17,528</b>	<b>16,768</b>	<b>15,618</b>	<b>15,312</b>	<b>218,902</b>	<b>218,902</b>
<b>Vehicles</b>														
Up to 22' and Driver	3,790	3,032	5,046	4,334	5,942	5,530	8,420	8,724	4,724	4,644	4,760	4,550	63,496	<b>Total Vehicles</b>
Up to 22' and Sr/Disabled	1,692	1,258	1,812	1,592	2,036	2,026	2,436	2,682	1,896	2,154	2,112	1,864	23,560	
Up to 22' and Commuter	12,082	9,996	12,350	11,272	14,138	13,976	14,406	14,208	12,948	13,498	12,486	12,760	154,120	
Over 22' to under 30'	218	216	294	246	388	320	338	382	232	304	218	182	3,338	
30' to under 40"	198	148	276	222	340	284	338	380	270	268	192	176	3,092	
40' to under 50'	60	38	60	64	100	82	104	168	68	80	54	44	922	
50' to under 60'	14	10	28	20	42	28	58	74	18	20	34	20	366	
60' to under 70'	22	14	32	22	38	28	34	38	44	26	20	16	334	
70' to under 80'	6	4	8	2	4	2	4	38	16	6	8	16	114	
80' to under 90'	0	0	0	2	0	2	0	0	0	2	0	0	6	
90' and greater	0	0	0	0	0	0	0	0	0	0	0	0	0	
Motorcycle w/Driver	28	8	56	68	86	82	94	76	34	40	16	4	592	
Motorcycle w/Commuter	36	32	114	154	226	196	222	248	144	80	52	20	1,524	
3-Wheel Vehicles	12	4	8	12	8	12	20	10	12	12	16	2	128	
<b>Monthly Vehicle Total</b>	<b>18,158</b>	<b>14,760</b>	<b>20,084</b>	<b>18,010</b>	<b>23,348</b>	<b>22,568</b>	<b>26,474</b>	<b>27,028</b>	<b>20,406</b>	<b>21,134</b>	<b>19,968</b>	<b>19,654</b>	<b>251,592</b>	<b>251,592</b>
<b>Non-Exempt Total</b>														
<b>Monthly Non-Exempt Total</b>	<b>31,920</b>	<b>25,600</b>	<b>36,022</b>	<b>34,016</b>	<b>43,710</b>	<b>42,482</b>	<b>54,662</b>	<b>55,694</b>	<b>37,934</b>	<b>37,902</b>	<b>35,586</b>	<b>34,966</b>	<b>470,494</b>	<b>470,494</b>
<b>Exempt</b>														
Exempt Vehicles	326	300	328	508	580	602	962	840	544	560	482	630	6,662	<b>Total Exempt</b>
Exempt Passengers	0	0	0	0	0	0	0	0	0	0	0	0	0	
<b>Monthly Exempt Total</b>	<b>326</b>	<b>300</b>	<b>328</b>	<b>508</b>	<b>580</b>	<b>602</b>	<b>962</b>	<b>840</b>	<b>544</b>	<b>560</b>	<b>482</b>	<b>630</b>	<b>6,662</b>	
<b>Other - NOT INCLUDED</b>														
Cars Left Behind	95	139	269	416	920	763	2,074	2,423	827	345	449	431	9,151	
<b>Totals</b>	<b>32,246</b>	<b>25,900</b>	<b>36,350</b>	<b>34,524</b>	<b>44,290</b>	<b>43,084</b>	<b>55,624</b>	<b>56,534</b>	<b>38,478</b>	<b>38,462</b>	<b>36,068</b>	<b>35,596</b>	<b>477,156</b>	
Change from 2018	9.44%	-4.58%	8.02%	5.55%	9.79%	0.40%	0.95%	12.74%	0.17%	5.38%	3.65%	3.79%	4.90%	

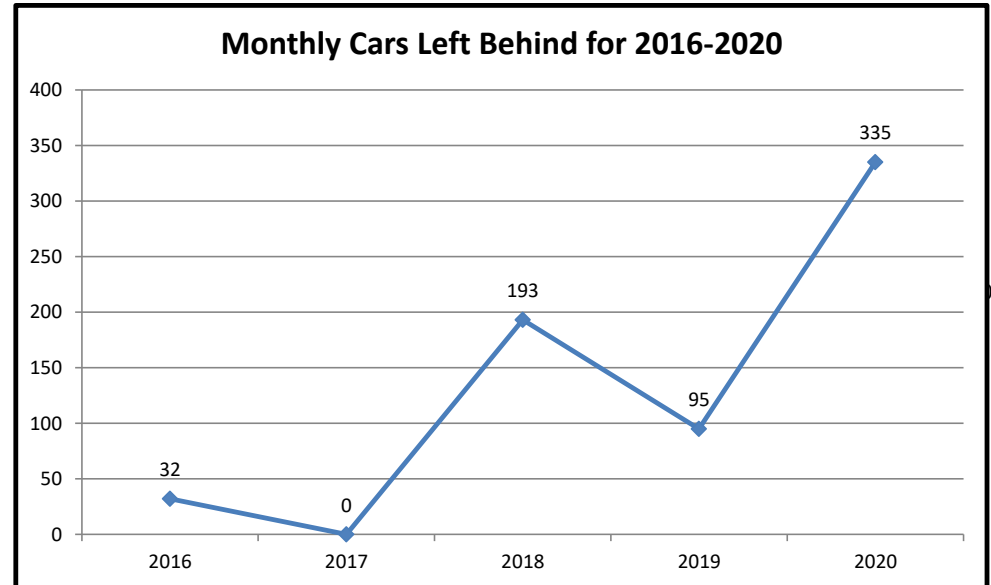
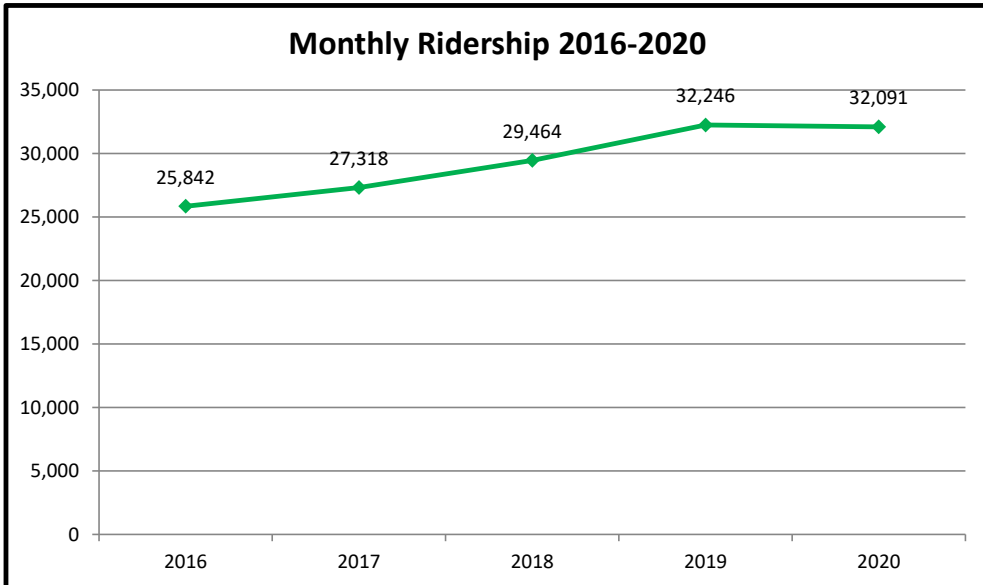
Pierce County Planning & Public Works  
Airport and Ferry Division  
9850 64th St W  
University Place, WA 98467

<b>Total Passengers</b>	<b>218,902</b>
<b>Total Vehicles</b>	<b>251,592</b>
<b>Total Exempt</b>	<b>6,662</b>
<b>Total Ridership</b>	<b>477,156</b>

## Pierce County Ferry - 2016 to 2020 Monthly Ridership For the Month of January

Combined Islands	2016	2017	2018	2019	2020	2016-2020 AVERAGES
<b>Passengers</b>						
Monthly Passenger Total	11,778	11,660	12,426	13,762	13,228	12,571
<b>Vehicles</b>						
Monthly Vehicle Total	14,040	15,534	16,936	18,158	18,616	16,657
<b>Exempt</b>						
Monthly Exempt Total	24	124	102	326	247	165
<b>Other - NOT INCLUDED</b>						
Monthly Cars Left Behind	32	0	193	95	335	131
<b>Totals</b>	<b>25,842</b>	<b>27,318</b>	<b>29,464</b>	<b>32,246</b>	<b>32,091</b>	<b>29,392</b>

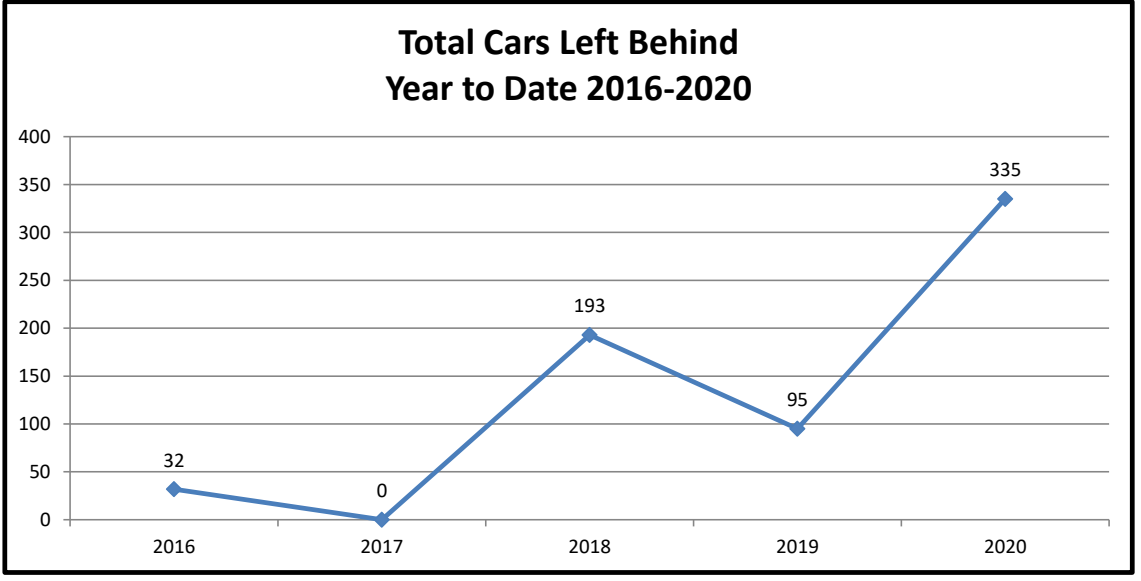
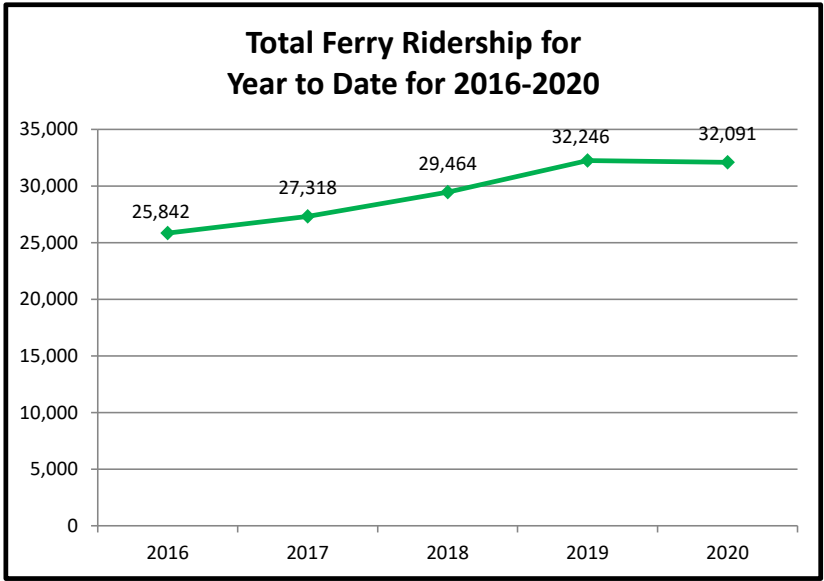
**Anderson & Ketron  
Islands**



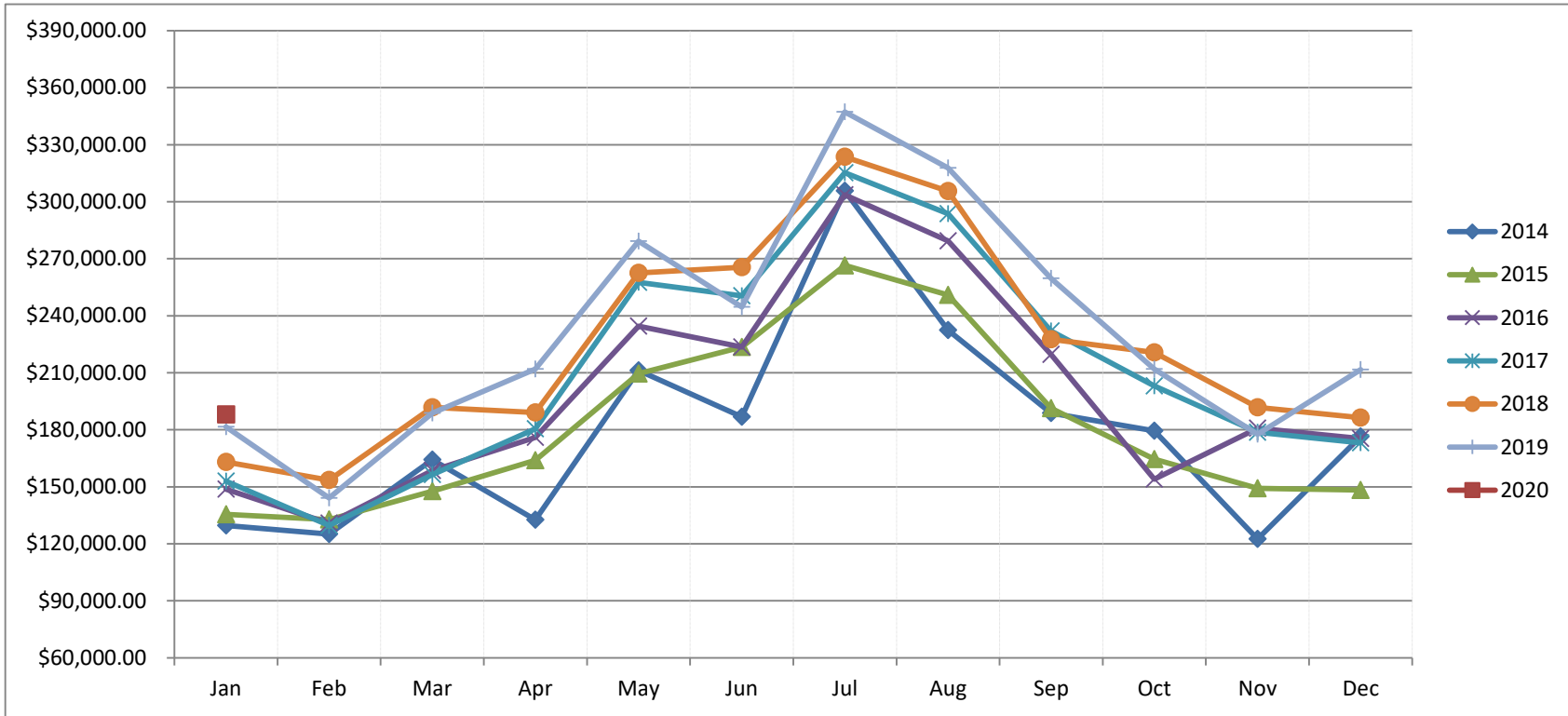
## Pierce County Ferry 2016-2020 Year to Date Totals Through January

Combined Islands	2016	2017	2018	2019	2020	2016-2020 AVERAGES
<b>Passengers</b>						
YTD Passenger Total	11,778	11,660	12,426	13,762	13,228	12,571
<b>Vehicles</b>						
YTD Vehicle Total	14,040	15,534	16,936	18,158	18,616	16,657
<b>Exempt</b>						
YTD Exempt Total	24	124	102	326	247	165
<b>Other - NOT INCLUDED</b>						
Cars Left Behind	32	0	193	95	335	131
<b>Totals</b>	<b>25,842</b>	<b>27,318</b>	<b>29,464</b>	<b>32,246</b>	<b>32,091</b>	<b>29,392</b>

**Anderson & Ketron  
Island**



## Pierce County Ferry System Ticket Sales by Month 2014-2020



Month	2014	2015	2016	2017	2018	2019	2020
Jan	\$ 129,625.00	\$ 135,455.00	\$ 148,753.95	\$ 152,936.35	\$ 163,007.30	\$ 181,627.00	\$ 188,014.00
Feb	\$ 125,146.00	\$ 132,736.00	\$ 130,783.20	\$ 129,663.00	\$ 153,516.00	\$ 144,150.00	
Mar	\$ 164,208.00	\$ 147,762.00	\$ 158,542.65	\$ 156,493.00	\$ 191,868.19	\$ 188,724.35	
Apr	\$ 132,604.00	\$ 163,957.70	\$ 176,019.27	\$ 180,457.00	\$ 189,160.92	\$ 211,979.00	
May	\$ 211,172.00	\$ 209,581.63	\$ 234,493.20	\$ 257,589.00	\$ 262,604.70	\$ 279,249.00	
Jun	\$ 186,820.00	\$ 223,529.80	\$ 223,570.55	\$ 250,428.00	\$ 265,570.00	\$ 244,633.00	
Jul	\$ 305,702.00	\$ 266,512.69	\$ 303,626.22	\$ 315,273.00	\$ 323,590.00	\$ 347,239.00	
Aug	\$ 232,362.00	\$ 250,957.44	\$ 279,322.38	\$ 293,666.00	\$ 305,517.00	\$ 317,752.00	
Sep	\$ 188,716.00	\$ 191,350.91	\$ 219,709.25	\$ 232,005.00	\$ 227,613.00	\$ 259,714.00	
Oct	\$ 179,409.00	\$ 164,579.42	\$ 153,994.35	\$ 203,140.00	\$ 220,739.00	\$ 211,919.00	
Nov	\$ 122,535.00	\$ 149,226.31	\$ 180,780.35	\$ 178,766.00	\$ 191,804.00	\$ 177,644.00	
Dec	\$ 176,474.00	\$ 148,272.10	\$ 175,444.45	\$ 173,176.00	\$ 186,402.00	\$ 211,720.00	
Totals	\$ 2,154,773.00	\$ 2,183,921.00	\$ 2,385,039.82	\$ 2,523,592.35	\$ 2,681,392.11	\$ 2,776,350.35	\$ 188,014.00